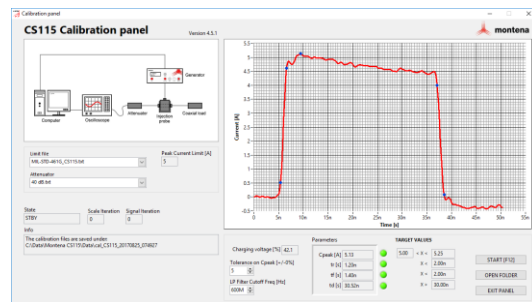


# CS115 Pulse generator

This transient generator is designed to comply with the requirements of the MIL-STD 461 CS115. The test method CS115 is used to verify the ability of the EUT to withstand pulse excitation on interconnecting cables. The pulse generator can be ordered with a complete set of accessories consisting of an injection probe, an attenuator, an oscilloscope and a control software.

The generator is available as a standalone unit or as a module which has to be installed inside Montena's POG-CS116 modular generator.



## SPECIFICATIONS

Type	PG-CS115 (standalone generator)	M-CS115 (module)
Standards	MIL-STD 461 D/E/F/G CS115 , MIL-STD 462 D CS115	
Output waveform	rectangular	
Maximum output voltage	about 1 kV (on 50 ohm)	
Repetition rates	single, 1 to 50 Hz	
Rise time (10 - 90 %)	≤ 2 ns	
Fall time (90 - 10 %)	≤ 2 ns	
Pulse duration (90 - 90 %)	≥ 30 ns	
Pulse amplitude variation	± 5 %	
Output impedance / connector	50 ohm / N (female)	
Storage / operating temperatures	5 - 50 °C / 20 - 45 °C	
Control interfaces	RS232 and USB	n/a
Power supply	90 - 264 Vac / 47 - 63 Hz / 150 VA	internal
Weight	13.5 kg	1.2 kg
Dimensions (L x W x H)	550 x 450 x 180 (4U) mm	240 x 235 x 65 mm

## Ordering information

TYPE	DESCRIPTION
<b>PG-CS115</b>	Pulse generator for MIL-STD 461 D/E/F/G CS115, 19" rack version
<b>M-CS115</b>	module for MIL-STD 461 D/E/F/G CS115, to be installed in the POG-CS116-x generator

See also our combined *CS114, CS115 and CS116 test system*.

## Related products / accessories

TYPE	DESCRIPTION
<b>IPDR250</b>	Injection probe for CS114, CS115 or CS116 tests, frequency range: 10 kHz - 400 MHz, internal diameter : 43.8 mm
<b>CJDR250</b>	Calibration jig for the injection probe IPDR250
<b>SW-CS115</b>	Windows-based control software application, for montena CS115 generator

Sales Partner:



**ABSOLUTE EMC** Lic.  
Covering sales in North America  
United States, Mexico, & Canada

absolute-emc.com  
Phone: 703-774-7505  
info@absolute-emc.com