

## Turntable TT 2.0 SI

### Technical data:

Diameter	2.0 m
Load capability	1000 kg
Point Load	250kg (at area of 10 cm x 10 cm)
Height	130 mm
Material cover plate	Stainless steel
Rotating speed adjustable	0.1 rpm – 2.5 rpm
Positioning accuracy	+/- 0.5°
Rotating angle	-200° to 400°
Motor	Synchronous servo motor
Turntable drive	Toothed belt drive, worm gear
Concentricity tolerance	+/- 3 mm
Elevation tolerance	< 5 mm
Ground plane connecting	every 50 mm
Square border interface (easy fitting into ground plane of chamber)	2.3 m x 2.3 m
Voltage	110 VAC – 230 VAC; 50 Hz / 60 Hz; single phase
Current consumption	max. 16 A
Required RCD	300 mA
Control cable	Fiber optic lines
Remote control via	LAN (TCP/IP); (IEEE only with NCD)
Interference suppression	20 dB under limits DIN EN 55011:2018-05 class B
Temperature working range	10°C – 35°C
Total weight	approx. 340 kg
Accessories	Service manual 3 m power supply cable

### Brief description

The turntable **TT 2.0 SI** is especially designed for flush mounted installation in semi anechoic electromagnetic absorption chambers. The carrier plate is made of stainless steel.

A 285 mm diameter opening in the center of the turntable provides the capability to insert power supply for testing.

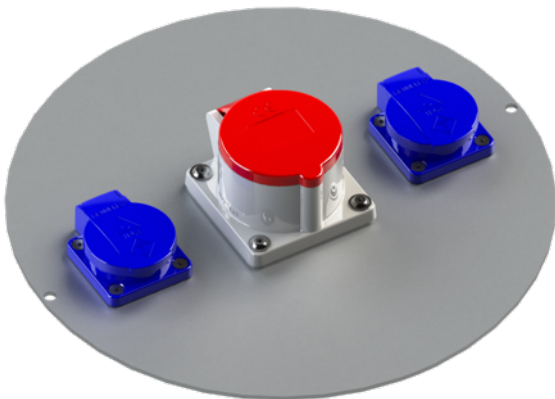
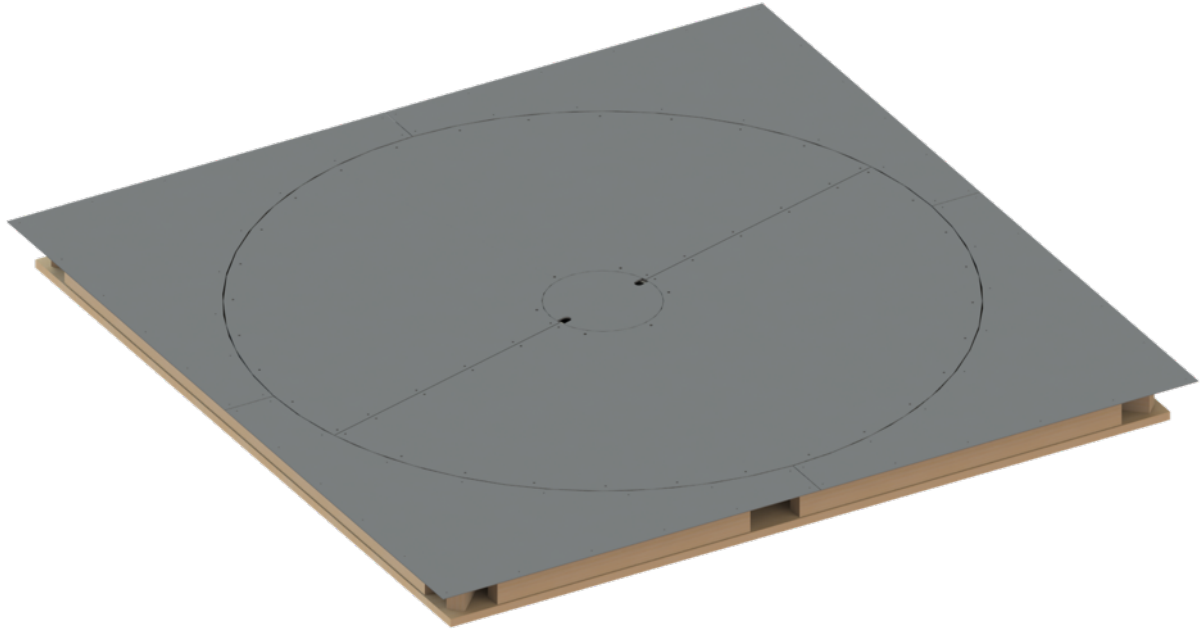
The **LAN (TCP/IP) - interface** provides an additional control option for all functions, when operated with the **FCU<sup>3.0</sup>** or **NCD Controller**

Sales Partner:

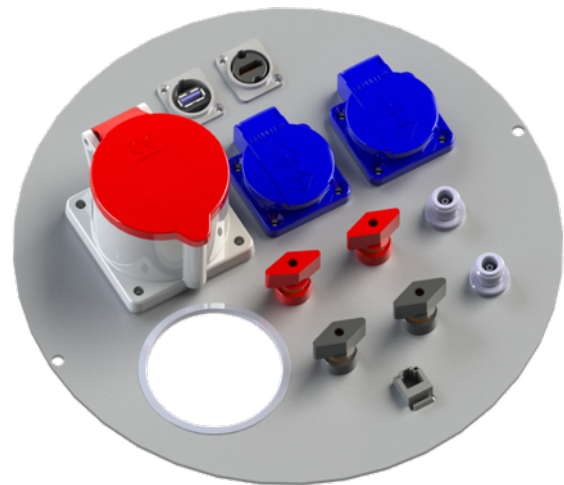


**ABSOLUTE EMC** Lic.  
Covering sales in North America  
United States, Mexico, & Canada

absolute-emc.com  
Phone:703-774-7505  
info@absolute-emc.com



Standard center plate



Example for a customized center plate

Information presented enclosed is subject to change as product enhancements are made regularly. Pictures included are for illustration purposes only and do not represent all possible configurations.

Sales Partner:



**ABSOLUTE EMC** Lic.  
Covering sales in North America  
United States, Mexico, & Canada

absolute-emc.com  
Phone: 703-774-7505  
info@absolute-emc.com