

8 - 12 GHz Linearly Polarised 23 dBi Horn Antenna fitted with a Waveguide Flange

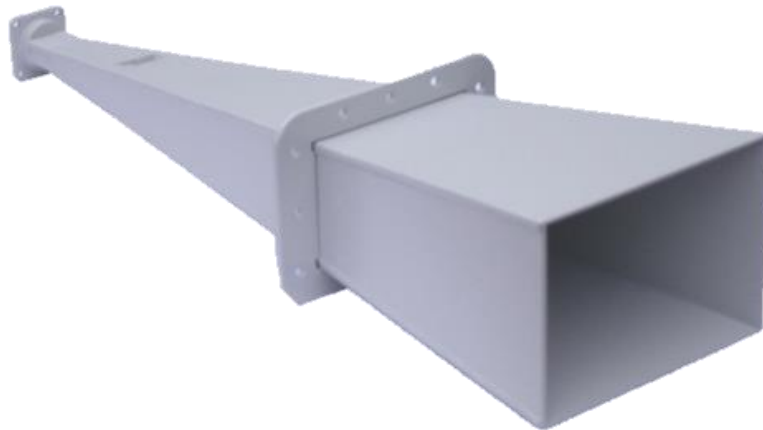
Catalogue number **QSH-SL-8-12-F-23**

Steatite reference **QMS-00171**

Contents **Summary**

Typical Gain / Antenna Factor - at 1 Metre

Typical Beamwidth / Patterns - at 1 Metre



Sales Partner



ABSOLUTE EMC Llc. Covering
sales in North America United
States, Mexico, & Canada

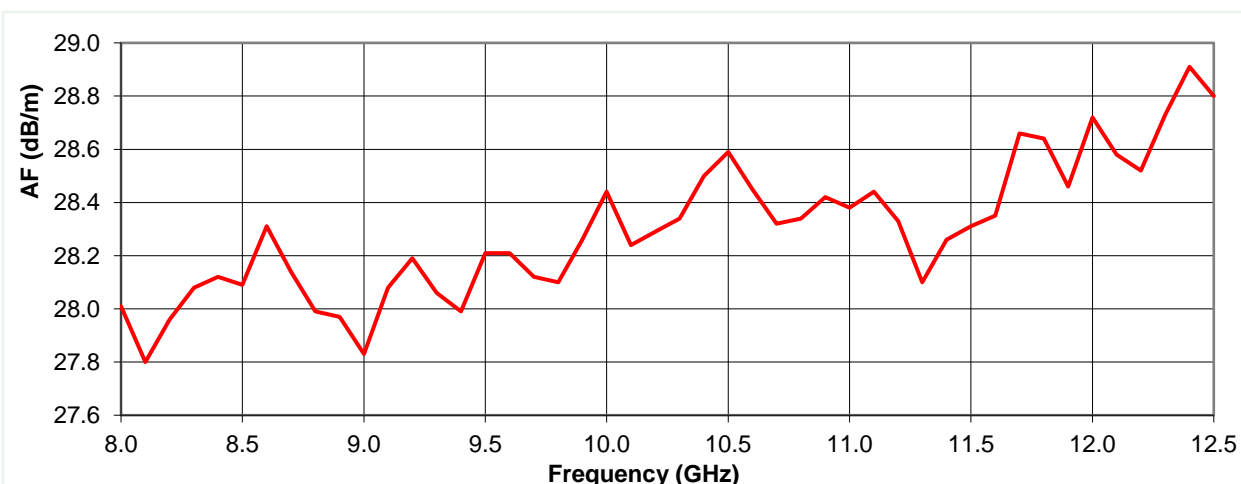
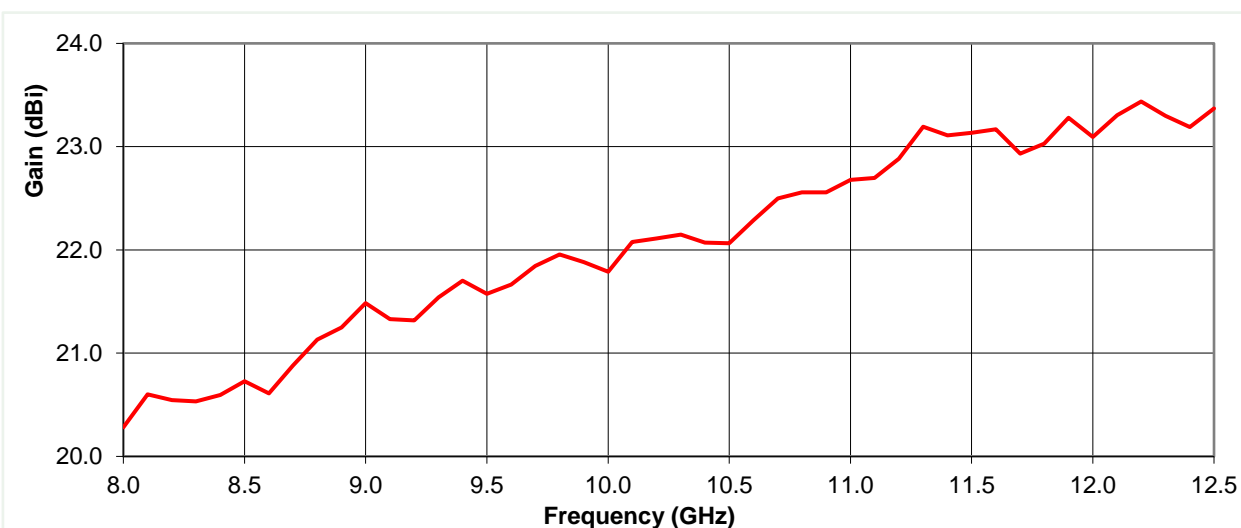
absolute-emc.com
Phone:703-774-7505
info@absolute-emc.com

Typical Specification

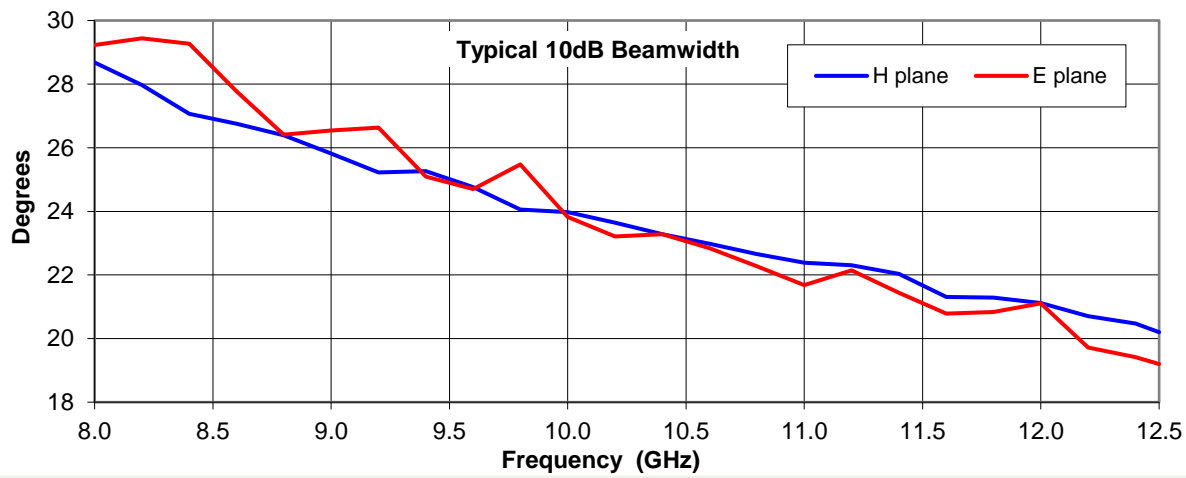
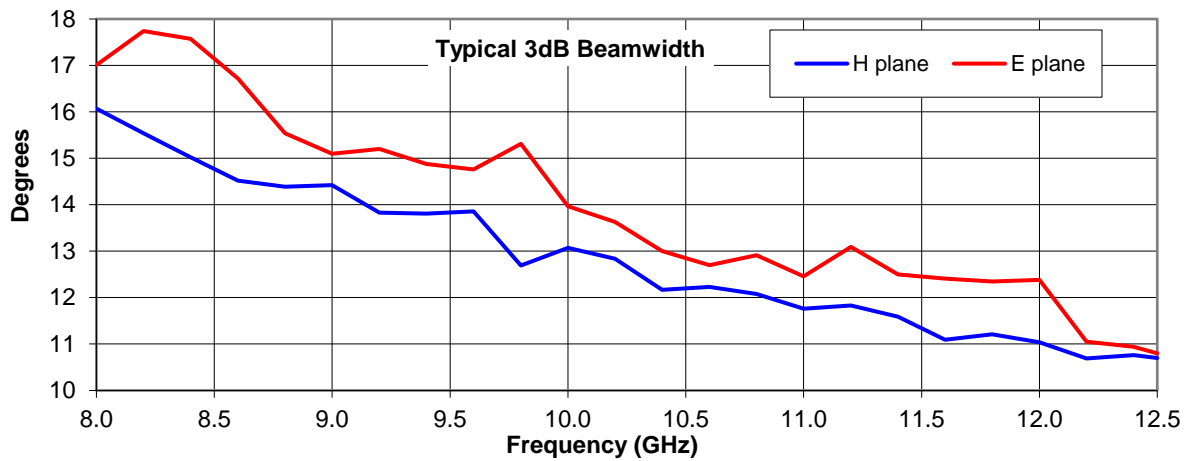
Frequency	8 to 12.5 GHz
Connector Type	UBR100 waveguide Flange
Power Handling	2 kW CW
VSWR	< 1.15 :1
Gain	20.5 to 23.4 dBi
Antenna Factor	27.8 to 28.9 dB/m
3dB Beamwidth	11 to 18 degrees
10dB Beamwidth	19 to 29 degrees
Weight	1.2 kg nominal
Maximum Size	169 x 112 mm external aperture x 531 mm long
Mounting	12 holes, diameter 6 mm, 35 mm centres
Construction	Welded aluminium, powdercoat finish.

Typical Antenna Gain / Factor - at 1 Metre

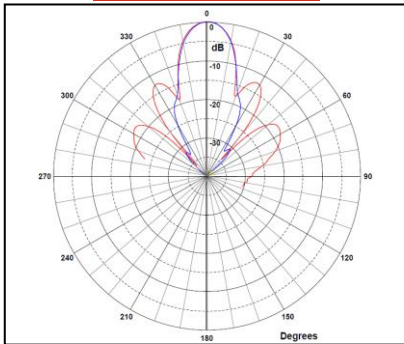
This is calculated by reference to standard gain horn antennas, and cross checked with reference to the antenna beamwidth, with an estimated error of +/- 0.8dB.



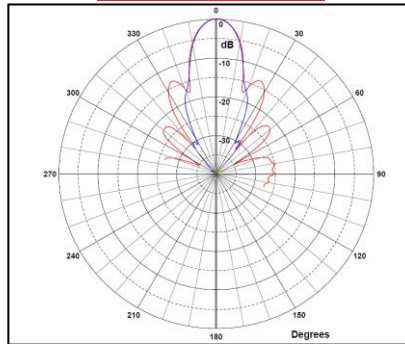
Typical Beamwidth / Radiation Patterns - at 1 Metre



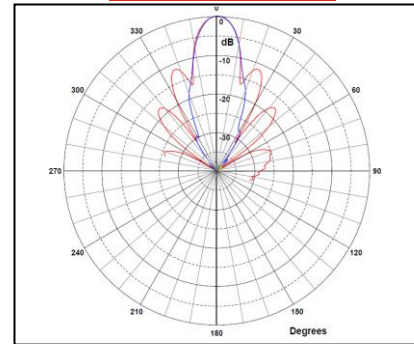
8 GHz



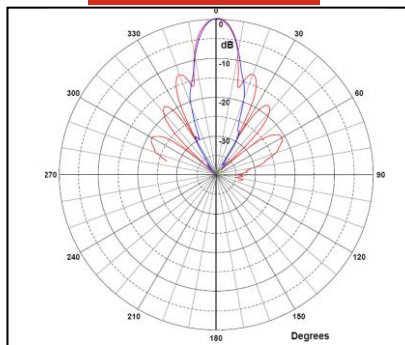
9 GHz



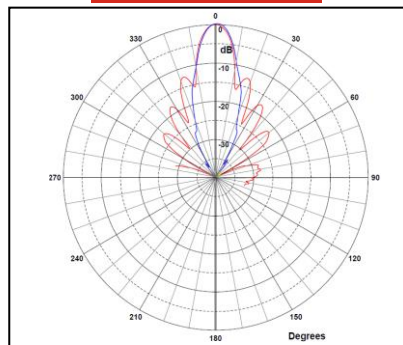
10 GHz



11 GHz



12.4 GHz



Red trace = E-plane, Blue trace = H-plane cut

Sales Partner



ABSOLUTE EMC Llc. Covering sales in North America United States, Mexico, & Canada

absolute-emc.com
Phone: 703-774-7505
info@absolute-emc.com