

SCHWARZBECK MESS - ELEKTRONIK

An der Klinge 29 D-69250 Schönau Tel.: 06228/1001 Fax.: (49)6228/1003

STLP 9128 D spezial Gewinn und Antennenfaktor für kurze Messentfernung STLP 9128 D special Gain and Antenna Factor for short Measuring Distances

Frequency	Gain (Iso.) Farfield	Ant.-Fact k Farfield	gi (10 m) Tip	k (10m) Tip	gi (3m) Tip	k (3m) Tip	gi (1m) Tip	k (1m) Tip
Frequenz	Gewinn Fernfeld	Ant.Faktor Fernfeld	gi (10 m) Spitze	k (10m) Spitze	gi (3m) Spitze	k (3m) Spitze	gi (1m) Spitze	k (1m) Spitze
MHz	dBm	dB/m	dBm	dB/m	dBm	dB/m	dBm	dB/m
60.0	-3.82	9.60	-4.97	10.75	-7.17	12.95	-11.46	17.24
65.0	-0.80	7.28	-1.95	8.42	-4.15	10.62	-8.44	14.92
70.0	1.43	5.69	0.28	6.84	-1.92	9.04	-6.21	13.33
75.0	3.28	4.44	2.13	5.59	-0.07	7.79	-4.36	12.08
80.0	5.24	3.04	4.16	4.12	2.07	6.21	-2.07	10.35
85.0	6.42	2.39	5.40	3.41	3.40	5.40	-0.60	9.41
90.0	7.20	2.10	6.24	3.07	4.33	4.98	0.45	8.85
95.0	7.88	1.89	6.97	2.81	5.15	4.63	1.39	8.38
100.0	8.37	1.85	7.50	2.72	5.75	4.47	2.11	8.11
105.0	8.58	2.06	7.75	2.90	6.07	4.57	2.54	8.11
110.0	8.64	2.41	7.84	3.20	6.23	4.82	2.79	8.25
115.0	8.70	2.73	7.94	3.49	6.39	5.05	3.06	8.38
120.0	8.69	3.11	7.96	3.85	6.46	5.35	3.21	8.60
125.0	8.74	3.42	8.04	4.12	6.58	5.57	3.42	8.74
130.0	8.68	3.82	8.00	4.50	6.60	5.89	3.53	8.97
135.0	8.62	4.21	7.97	4.86	6.61	6.21	3.61	9.22
140.0	8.57	4.57	7.94	5.20	6.63	6.51	3.71	9.43
145.0	8.54	4.91	7.93	5.52	6.66	6.79	3.80	9.64
150.0	8.54	5.20	7.95	5.79	6.72	7.02	3.93	9.81
155.0	8.63	5.40	8.06	5.97	6.86	7.17	4.12	9.90
160.0	8.69	5.61	8.13	6.17	6.96	7.34	4.29	10.01
165.0	8.71	5.86	8.17	6.40	7.03	7.54	4.41	10.16
170.0	8.68	6.15	8.16	6.67	7.05	7.78	4.49	10.34
175.0	8.57	6.51	8.06	7.02	6.99	8.09	4.49	10.59
180.0	8.46	6.87	7.97	7.36	6.91	8.41	4.46	10.87
185.0	8.52	7.04	8.04	7.52	7.01	8.55	4.60	10.96
190.0	8.62	7.18	8.15	7.64	7.15	8.65	4.79	11.01
195.0	8.60	7.42	8.14	7.88	7.16	8.86	4.85	11.17
200.0	8.48	7.76	8.04	8.21	7.08	9.16	4.81	11.43
205.0	8.38	8.08	7.95	8.51	7.02	9.44	4.80	11.65
210.0	8.24	8.42	7.82	8.85	6.90	9.76	4.72	11.95
215.0	8.14	8.73	7.72	9.14	6.83	10.04	4.68	12.19
220.0	8.30	8.77	7.90	9.17	7.02	10.05	4.92	12.14
225.0	8.59	8.67	8.20	9.07	7.34	9.93	5.27	11.99
230.0	8.82	8.63	8.43	9.02	7.59	9.86	5.56	11.89
235.0	8.93	8.71	8.55	9.09	7.73	9.91	5.73	11.91
240.0	8.94	8.88	8.57	9.25	7.76	10.06	5.80	12.02
245.0	8.81	9.19	8.45	9.55	7.66	10.34	5.73	12.27
250.0	8.59	9.59	8.23	9.95	7.45	10.73	5.54	12.63
255.0	8.44	9.91	8.09	10.26	7.33	11.02	5.46	12.90
260.0	8.39	10.13	8.05	10.47	7.30	11.22	5.47	13.05
265.0	8.44	10.24	8.10	10.58	7.37	11.32	5.55	13.14
270.0	8.58	10.27	8.25	10.60	7.53	11.32	5.75	13.10
275.0	8.77	10.24	8.45	10.56	7.73	11.27	5.97	13.03
280.0	8.93	10.23	8.61	10.55	7.91	11.26	6.16	13.00
285.0	9.04	10.28	8.73	10.59	8.04	11.27	6.34	12.98
290.0	9.06	10.41	8.75	10.72	8.08	11.39	6.39	13.08
295.0	8.97	10.65	8.67	10.95	8.00	11.62	6.33	13.29
300.0	8.83	10.93	8.53	11.23	7.87	11.89	6.22	13.54

SCHWARZBECK MESS - ELEKTRONIK

An der Klinge 29 D-69250 Schönau Tel.: 06228/1001 Fax.: (49)6228/1003

STLP 9128 D spezial Gewinn und Antennenfaktor für kurze Messentfernung STLP 9128 D special Gain and Antenna Factor for short Measuring Distances

Frequency	Gain (Iso.) Farfield	Ant.-Fact k Farfield	gi (10 m) Tip	k (10m) Tip	gi (3m) Tip	k (3m) Tip	gi (1m) Tip	k (1m) Tip
Frequenz	Gewinn Fernfeld	Ant.Faktor Fernfeld	gi (10 m) Spitze	k (10m) Spitze	gi (3m) Spitze	k (3m) Spitze	gi (1m) Spitze	k (1m) Spitze
MHz	dBm	dB/m	dBm	dB/m	dBm	dB/m	dBm	dB/m
305.0	8.66	11.25	8.37	11.54	7.73	12.18	6.12	13.79
310.0	8.55	11.50	8.26	11.78	7.63	12.42	6.04	14.01
315.0	8.50	11.69	8.22	11.97	7.59	12.59	6.02	14.16
320.0	8.56	11.76	8.28	12.04	7.67	12.66	6.12	14.21
325.0	8.68	11.78	8.41	12.05	7.80	12.66	6.27	14.19
330.0	8.83	11.76	8.56	12.03	7.96	12.63	6.45	14.14
335.0	8.98	11.74	8.71	12.01	8.13	12.60	6.63	14.09
340.0	9.14	11.71	8.88	11.97	8.30	12.55	6.83	14.02
345.0	9.23	11.75	8.97	12.00	8.40	12.57	6.95	14.03
350.0	9.29	11.81	9.04	12.06	8.48	12.63	7.04	14.06
355.0	9.28	11.94	9.03	12.20	8.47	12.76	7.03	14.19
360.0	9.19	12.16	8.94	12.40	8.39	12.96	6.98	14.37
365.0	9.04	12.43	8.80	12.67	8.25	13.21	6.86	14.60
370.0	8.91	12.67	8.67	12.91	8.13	13.45	6.77	14.82
375.0	8.81	12.89	8.57	13.13	8.05	13.65	6.70	15.00
380.0	8.77	13.05	8.53	13.28	8.01	13.81	6.66	15.16
385.0	8.77	13.16	8.54	13.39	8.02	13.91	6.69	15.24
390.0	8.78	13.26	8.55	13.49	8.04	14.00	6.74	15.30
395.0	8.84	13.31	8.61	13.54	8.10	14.05	6.80	15.35
400.0	8.90	13.36	8.68	13.58	8.18	14.08	6.89	15.37
405.0	9.02	13.35	8.80	13.57	8.31	14.06	7.05	15.32
410.0	9.17	13.31	8.95	13.52	8.46	14.01	7.20	15.28
415.0	9.30	13.28	9.09	13.50	8.60	13.98	7.36	15.22
420.0	9.39	13.29	9.18	13.51	8.71	13.98	7.49	15.20
425.0	9.43	13.36	9.22	13.57	8.75	14.04	7.53	15.26
430.0	9.41	13.48	9.20	13.69	8.74	14.15	7.54	15.35
435.0	9.35	13.64	9.14	13.85	8.68	14.31	7.48	15.51
440.0	9.29	13.80	9.09	14.00	8.63	14.45	7.46	15.63
445.0	9.12	14.07	8.92	14.26	8.48	14.71	7.32	15.87
450.0	8.89	14.39	8.69	14.59	8.25	15.04	7.09	16.19
455.0	8.75	14.63	8.56	14.82	8.12	15.26	6.99	16.39
460.0	8.66	14.82	8.47	15.01	8.03	15.44	6.90	16.58
465.0	8.58	14.99	8.39	15.18	7.97	15.60	6.85	16.72
470.0	8.58	15.08	8.39	15.27	7.97	15.70	6.85	16.81
475.0	8.73	15.02	8.55	15.21	8.13	15.63	7.04	16.72
480.0	8.82	15.02	8.64	15.21	8.22	15.63	7.13	16.72
485.0	8.88	15.05	8.70	15.24	8.28	15.66	7.19	16.75
490.0	9.00	15.02	8.82	15.20	8.41	15.61	7.34	16.68
495.0	9.19	14.92	9.01	15.10	8.60	15.51	7.53	16.58
500.0	9.24	14.96	9.06	15.14	8.67	15.53	7.62	16.58
510.0	9.19	15.18	9.02	15.35	8.63	15.74	7.61	16.77
520.0	9.01	15.53	8.84	15.70	8.45	16.09	7.43	17.11
530.0	8.85	15.86	8.68	16.02	8.30	16.40	7.30	17.40
540.0	8.69	16.18	8.53	16.34	8.16	16.71	7.18	17.69
550.0	8.44	16.59	8.28	16.75	7.92	17.11	6.97	18.06
560.0	8.44	16.74	8.28	16.90	7.92	17.26	6.97	18.22
570.0	8.64	16.70	8.49	16.85	8.13	17.20	7.20	18.14
580.0	8.94	16.55	8.79	16.70	8.45	17.04	7.54	17.95
590.0	9.17	16.47	9.02	16.62	8.68	16.96	7.77	17.87

SCHWARZBECK MESS - ELEKTRONIK

An der Klinge 29 D-69250 Schönau Tel.: 06228/1001 Fax.: (49)6228/1003

STLP 9128 D spezial Gewinn und Antennenfaktor für kurze Messentfernung STLP 9128 D special Gain and Antenna Factor for short Measuring Distances

Frequency	Gain (Iso.) Farfield	Ant.-Fact k Farfield	gi (10 m) Tip	k (10m) Tip	gi (3m) Tip	k (3m) Tip	gi (1m) Tip	k (1m) Tip
Frequenz	Gewinn Fernfeld	Ant.Faktor Fernfeld	gi (10 m) Spitze	k (10m) Spitze	gi (3m) Spitze	k (3m) Spitze	gi (1m) Spitze	k (1m) Spitze
MHz	dBm	dB/m	dBm	dB/m	dBm	dB/m	dBm	dB/m
600.0	9.35	16.43	9.20	16.58	8.87	16.91	7.99	17.80
610.0	9.39	16.54	9.24	16.68	8.91	17.02	8.03	17.90
620.0	9.40	16.67	9.26	16.81	8.93	17.13	8.07	17.99
630.0	9.34	16.87	9.20	17.00	8.89	17.32	8.05	18.16
640.0	9.25	17.09	9.11	17.23	8.80	17.54	7.96	18.38
650.0	9.08	17.40	8.95	17.53	8.64	17.84	7.83	18.65
660.0	8.93	17.68	8.80	17.81	8.49	18.12	7.68	18.93
670.0	8.83	17.91	8.70	18.04	8.41	18.34	7.62	19.13
680.0	8.82	18.05	8.69	18.18	8.40	18.47	7.61	19.26
690.0	8.82	18.18	8.69	18.31	8.40	18.60	7.61	19.39
700.0	8.89	18.23	8.76	18.36	8.48	18.64	7.71	19.41
710.0	8.99	18.26	8.86	18.38	8.58	18.67	7.81	19.43
720.0	9.13	18.24	9.01	18.36	8.73	18.63	7.99	19.37
730.0	9.27	18.22	9.15	18.34	8.87	18.61	8.13	19.35
740.0	9.38	18.22	9.26	18.34	9.00	18.61	8.28	19.32
750.0	9.40	18.32	9.28	18.44	9.02	18.70	8.30	19.42
760.0	9.35	18.49	9.23	18.60	8.97	18.87	8.25	19.59
770.0	9.31	18.64	9.20	18.75	8.94	19.01	8.25	19.70
780.0	9.27	18.79	9.16	18.90	8.90	19.16	8.21	19.85
790.0	9.17	19.00	9.06	19.11	8.80	19.37	8.11	20.06
800.0	9.01	19.27	8.90	19.38	8.66	19.63	7.99	20.29
810.0	8.85	19.54	8.74	19.65	8.50	19.89	7.83	20.56
820.0	8.87	19.63	8.76	19.73	8.52	19.98	7.85	20.65
830.0	9.01	19.59	8.91	19.70	8.67	19.93	8.03	20.58
840.0	9.21	19.50	9.11	19.60	8.87	19.84	8.23	20.48
850.0	9.40	19.41	9.30	19.51	9.06	19.75	8.42	20.39
860.0	9.56	19.35	9.46	19.45	9.23	19.68	8.61	20.30
870.0	9.71	19.30	9.61	19.40	9.38	19.63	8.76	20.25
880.0	9.82	19.29	9.72	19.39	9.49	19.62	8.87	20.24
890.0	9.86	19.35	9.76	19.45	9.53	19.67	8.91	20.29
900.0	9.81	19.49	9.71	19.59	9.50	19.81	8.90	20.40
910.0	9.66	19.74	9.56	19.84	9.35	20.05	8.75	20.65
920.0	9.47	20.03	9.37	20.12	9.16	20.34	8.56	20.93
930.0	9.32	20.27	9.22	20.36	9.01	20.58	8.41	21.18
940.0	9.23	20.45	9.14	20.54	8.93	20.75	8.36	21.32
950.0	9.21	20.56	9.12	20.66	8.91	20.86	8.34	21.43
960.0	9.13	20.74	9.04	20.83	8.83	21.03	8.26	21.60
970.0	9.03	20.93	8.94	21.02	8.73	21.22	8.16	21.79
980.0	8.87	21.17	8.78	21.26	8.59	21.46	8.04	22.00
990.0	8.80	21.33	8.71	21.42	8.52	21.62	7.97	22.16
1000.0	8.79	21.43	8.70	21.52	8.51	21.71	7.96	22.26
1020.0	8.92	21.47	8.83	21.56	8.64	21.76	8.09	22.30
1040.0	9.18	21.38	9.10	21.46	8.91	21.65	8.39	22.17
1060.0	9.54	21.19	9.46	21.27	9.27	21.46	8.75	21.97
1080.0	9.68	21.21	9.60	21.29	9.42	21.47	8.93	21.96
1100.0	9.77	21.28	9.69	21.36	9.51	21.53	9.02	22.03
1120.0	9.85	21.35	9.77	21.43	9.59	21.61	9.10	22.10
1140.0	9.83	21.53	9.76	21.60	9.59	21.77	9.12	22.24
1160.0	9.61	21.90	9.54	21.97	9.37	22.14	8.90	22.61

SCHWARZBECK MESS - ELEKTRONIK

An der Klinge 29 D-69250 Schönau Tel.: 06228/1001 Fax.: (49)6228/1003

STLP 9128 D spezial Gewinn und Antennenfaktor für kurze Messentfernung STLP 9128 D special Gain and Antenna Factor for short Measuring Distances

Frequency	Gain (Iso.) Farfield	Ant.-Fact k Farfield	gi (10 m) Tip	k (10m) Tip	gi (3m) Tip	k (3m) Tip	gi (1m) Tip	k (1m) Tip
Frequenz	Gewinn Fernfeld	Ant.Faktor Fernfeld	gi (10 m) Spitze	k (10m) Spitze	gi (3m) Spitze	k (3m) Spitze	gi (1m) Spitze	k (1m) Spitze
MHz	dBi	dB/m	dBi	dB/m	dBi	dB/m	dBi	dB/m
1180.0	9.46	22.20	9.39	22.27	9.22	22.44	8.75	22.91
1200.0	9.77	22.03	9.70	22.10	9.54	22.26	9.10	22.70
1220.0	9.86	22.09	9.79	22.16	9.63	22.32	9.19	22.76
1240.0	9.88	22.21	9.81	22.28	9.65	22.44	9.21	22.88
1260.0	10.06	22.17	9.99	22.24	9.83	22.40	9.39	22.84
1280.0	10.42	21.94	10.36	22.01	10.21	22.16	9.79	22.57
1300.0	10.53	21.97	10.47	22.03	10.32	22.18	9.90	22.60
1320.0	10.47	22.16	10.41	22.23	10.26	22.38	9.84	22.79
1340.0	10.28	22.48	10.22	22.55	10.07	22.70	9.65	23.11
1360.0	10.29	22.60	10.23	22.66	10.09	22.80	9.70	23.19
1380.0	10.24	22.78	10.18	22.84	10.04	22.98	9.65	23.37
1400.0	10.13	23.01	10.07	23.07	9.93	23.21	9.54	23.60
1420.0	10.00	23.27	9.94	23.33	9.80	23.47	9.41	23.85
1440.0	9.91	23.48	9.85	23.54	9.71	23.68	9.32	24.06
1460.0	9.84	23.67	9.78	23.72	9.65	23.85	9.29	24.21
1480.0	9.70	23.93	9.64	23.98	9.51	24.11	9.15	24.47
1500.0	9.89	23.85	9.83	23.91	9.70	24.04	9.34	24.40
1520.0	10.21	23.65	10.15	23.70	10.02	23.83	9.66	24.19
1540.0	10.51	23.46	10.45	23.52	10.32	23.65	9.96	24.01
1560.0	10.64	23.44	10.59	23.49	10.47	23.61	10.13	23.95
1580.0	10.67	23.52	10.62	23.58	10.50	23.70	10.16	24.03
1600.0	10.65	23.65	10.60	23.70	10.48	23.82	10.14	24.16
1620.0	10.78	23.63	10.73	23.68	10.61	23.80	10.27	24.14
1640.0	10.80	23.72	10.75	23.77	10.63	23.89	10.29	24.22
1660.0	10.69	23.93	10.64	23.98	10.52	24.10	10.18	24.44
1680.0	10.62	24.11	10.57	24.15	10.46	24.26	10.15	24.57
1700.0	10.46	24.37	10.41	24.42	10.30	24.53	9.99	24.83
1720.0	10.22	24.71	10.17	24.76	10.06	24.87	9.75	25.18
1740.0	10.19	24.84	10.14	24.89	10.03	25.00	9.72	25.31
1760.0	10.25	24.88	10.20	24.93	10.09	25.04	9.78	25.35
1780.0	10.47	24.76	10.42	24.81	10.31	24.92	10.00	25.22
1800.0	10.61	24.72	10.56	24.76	10.45	24.87	10.14	25.18
1820.0	10.47	24.95	10.43	24.99	10.33	25.09	10.05	25.38
1840.0	10.45	25.07	10.41	25.11	10.31	25.21	10.03	25.49
1860.0	10.49	25.12	10.45	25.16	10.35	25.26	10.07	25.54
1880.0	10.57	25.13	10.53	25.18	10.43	25.28	10.15	25.56
1900.0	10.51	25.29	10.47	25.33	10.37	25.43	10.09	25.71
1920.0	10.36	25.53	10.32	25.57	10.22	25.67	9.94	25.95
1940.0	10.51	25.47	10.47	25.51	10.37	25.61	10.09	25.89
1960.0	10.65	25.42	10.61	25.46	10.51	25.56	10.23	25.84
1980.0	10.74	25.41	10.70	25.45	10.61	25.54	10.36	25.80
2000.0	10.76	25.48	10.72	25.52	10.63	25.61	10.38	25.86
2050.0	10.69	25.77	10.65	25.80	10.56	25.89	10.31	26.15
2100.0	10.23	26.43	10.19	26.47	10.10	26.56	9.85	26.82
2150.0	10.81	26.06	10.77	26.10	10.68	26.19	10.43	26.44
2200.0	11.02	26.05	10.99	26.08	10.90	26.16	10.68	26.39
2250.0	10.54	26.72	10.51	26.76	10.42	26.84	10.20	27.06
2300.0	10.76	26.69	10.73	26.73	10.64	26.81	10.42	27.04
2350.0	10.73	26.91	10.70	26.95	10.61	27.03	10.39	27.25

SCHWARZBECK MESS - ELEKTRONIK

An der Klinge 29 D-69250 Schönau Tel.: 06228/1001 Fax.: (49)6228/1003

STLP 9128 D spezial Gewinn und Antennenfaktor für kurze Messentfernung STLP 9128 D special Gain and Antenna Factor for short Measuring Distances

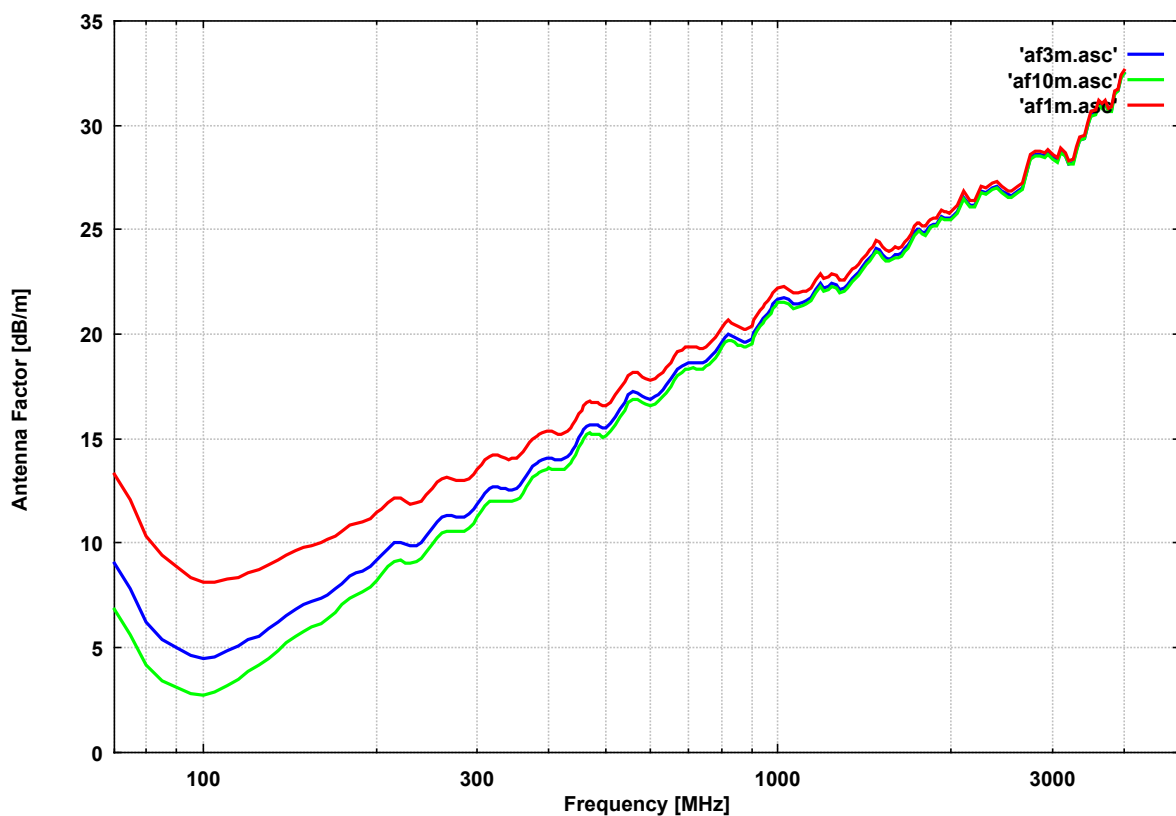
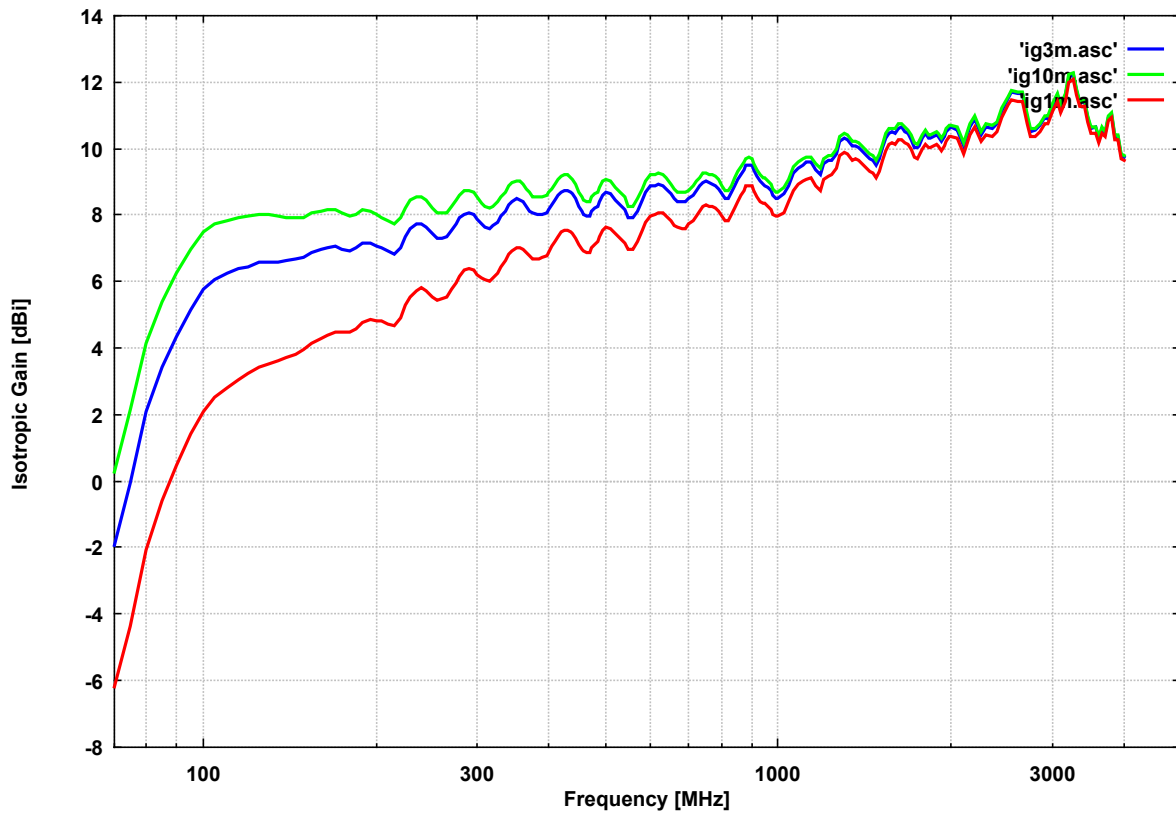
Frequency	Gain (Iso.) Farfield	Ant.-Fact k Farfield	gi (10 m) Tip	k (10m) Tip	gi (3m) Tip	k (3m) Tip	gi (1m) Tip	k (1m) Tip
Frequenz	Gewinn Fernfeld	Ant.Faktor Fernfeld	gi (10 m) Spitze	k (10m) Spitze	gi (3m) Spitze	k (3m) Spitze	gi (1m) Spitze	k (1m) Spitze
MHz	dB	dB/m	dB	dB/m	dB	dB/m	dB	dB/m
2400.0	10.85	26.97	10.82	27.01	10.73	27.09	10.51	27.31
2450.0	11.24	26.76	11.21	26.79	11.14	26.86	10.94	27.06
2500.0	11.61	26.57	11.58	26.60	11.51	26.67	11.31	26.87
2550.0	11.79	26.56	11.76	26.59	11.69	26.66	11.49	26.86
2600.0	11.75	26.77	11.72	26.80	11.65	26.87	11.45	27.07
2650.0	11.75	26.93	11.72	26.97	11.65	27.04	11.45	27.23
2700.0	11.06	27.79	11.03	27.82	10.96	27.89	10.76	28.09
2750.0	10.62	28.39	10.59	28.41	10.53	28.47	10.36	28.64
2800.0	10.63	28.53	10.60	28.56	10.54	28.62	10.37	28.79
2850.0	10.79	28.53	10.76	28.55	10.70	28.61	10.53	28.78
2900.0	11.03	28.44	11.00	28.46	10.94	28.52	10.77	28.69
2950.0	11.01	28.61	10.98	28.63	10.92	28.69	10.75	28.86
3000.0	11.39	28.37	11.36	28.40	11.30	28.46	11.13	28.63
3050.0	11.68	28.23	11.65	28.25	11.59	28.31	11.42	28.48
3100.0	11.36	28.69	11.33	28.71	11.27	28.77	11.10	28.94
3150.0	11.71	28.48	11.68	28.50	11.62	28.56	11.45	28.73
3200.0	12.23	28.09	12.21	28.11	12.16	28.17	12.02	28.31
3250.0	12.32	28.14	12.30	28.16	12.25	28.21	12.11	28.35
3300.0	11.82	28.77	11.80	28.79	11.75	28.84	11.61	28.98
3350.0	11.46	29.26	11.44	29.28	11.39	29.33	11.25	29.48
3400.0	11.51	29.34	11.49	29.36	11.44	29.41	11.30	29.55
3450.0	11.03	29.95	11.01	29.97	10.96	30.02	10.82	30.16
3500.0	10.69	30.41	10.67	30.43	10.62	30.48	10.48	30.63
3550.0	10.70	30.52	10.68	30.55	10.63	30.60	10.49	30.74
3600.0	10.38	30.97	10.36	30.99	10.31	31.04	10.17	31.18
3650.0	10.65	30.82	10.63	30.84	10.58	30.89	10.44	31.03
3700.0	10.53	31.05	10.51	31.07	10.47	31.11	10.36	31.23
3750.0	11.02	30.68	11.00	30.70	10.96	30.74	10.85	30.85
3800.0	11.12	30.70	11.10	30.71	11.06	30.75	10.95	30.87
3850.0	10.43	31.50	10.41	31.52	10.37	31.56	10.26	31.67
3900.0	10.43	31.61	10.41	31.63	10.37	31.67	10.26	31.78
3950.0	9.87	32.28	9.85	32.30	9.81	32.34	9.70	32.45
4000.0	9.80	32.46	9.78	32.48	9.74	32.52	9.63	32.63

SCHWARZBECK MESS - ELEKTRONIK

An der Klinge 29 D-69250 Schönau Tel.: 06228/1001 Fax.: (49)6228/1003

STLP 9128 D **spezial Gewinn und Antennenfaktor für kurze Messentfernung**
STLP 9128 D special Gain and Antenna Factor for short Measuring Distances

Bezugspunkt: Spitze
Reference Point: Tip



SCHWARZBECK MESS - ELEKTRONIK

An der Klinge 29 D-69250 Schönau Tel.: 06228/1001 Fax.: (49)6228/1003

STLP 9128 D spezial Gewinn und Antennenfaktor für kurze Messentfernung STLP 9128 D special Gain and Antenna Factor for short Measuring Distances

Frequency	Gain (Iso.) Farfield	Ant.-Fact k Farfield	gi (10 m) Center	k (10m) Center	gi (3m) Center	k (3m) Center
Frequenz	Gewinn Fernfeld	Ant.Faktor Fernfeld	gi (10 m) Mitte	k (10m) Mitte	gi (3m) Mitte	k (3m) Mitte
MHz	dBi	dB/m	dBi	dB/m	dBi	dB/m
60.0	-3.82	9.60	-4.41	10.19	-5.65	11.44
65.0	-0.80	7.28	-1.39	7.87	-2.63	9.11
70.0	1.43	5.69	0.84	6.28	-0.40	7.53
75.0	3.28	4.44	2.69	5.03	1.45	6.27
80.0	5.24	3.04	4.72	3.56	3.62	4.66
85.0	6.42	2.39	5.96	2.85	4.98	3.83
90.0	7.20	2.10	6.80	2.50	5.94	3.37
95.0	7.88	1.89	7.54	2.24	6.78	2.99
100.0	8.37	1.85	8.07	2.15	7.41	2.81
105.0	8.58	2.06	8.32	2.32	7.75	2.89
110.0	8.64	2.41	8.42	2.63	7.93	3.12
115.0	8.70	2.73	8.52	2.91	8.11	3.32
120.0	8.69	3.11	8.54	3.26	8.20	3.61
125.0	8.74	3.42	8.62	3.54	8.34	3.81
130.0	8.68	3.82	8.59	3.91	8.38	4.12
135.0	8.62	4.21	8.56	4.27	8.41	4.42
140.0	8.57	4.57	8.53	4.61	8.44	4.70
145.0	8.54	4.91	8.52	4.92	8.48	4.97
150.0	8.54	5.20	8.54	5.20	8.55	5.19
155.0	8.63	5.40	8.65	5.37	8.70	5.32
160.0	8.69	5.61	8.73	5.57	8.82	5.48
165.0	8.71	5.86	8.77	5.80	8.90	5.67
170.0	8.68	6.15	8.75	6.07	8.93	5.90
175.0	8.57	6.51	8.66	6.42	8.88	6.20
180.0	8.46	6.87	8.56	6.76	8.81	6.51
185.0	8.52	7.04	8.64	6.93	8.92	6.64
190.0	8.62	7.18	8.75	7.04	9.07	6.73
195.0	8.60	7.42	8.74	7.28	9.09	6.93
200.0	8.48	7.76	8.64	7.60	9.02	7.22
205.0	8.38	8.08	8.55	7.90	8.96	7.49
210.0	8.24	8.42	8.42	8.24	8.85	7.81
215.0	8.14	8.73	8.33	8.54	8.79	8.08
220.0	8.30	8.77	8.50	8.57	8.99	8.08
225.0	8.59	8.67	8.80	8.46	9.31	7.95
230.0	8.82	8.63	9.04	8.41	9.58	7.88
235.0	8.93	8.71	9.16	8.48	9.72	7.92
240.0	8.94	8.88	9.18	8.65	9.76	8.07
245.0	8.81	9.19	9.06	8.95	9.66	8.34
250.0	8.59	9.59	8.84	9.34	9.46	8.72
255.0	8.44	9.91	8.70	9.65	9.34	9.01
260.0	8.39	10.13	8.66	9.86	9.32	9.20
265.0	8.44	10.24	8.71	9.97	9.39	9.30
270.0	8.58	10.27	8.86	9.98	9.56	9.29
275.0	8.77	10.24	9.06	9.95	9.77	9.24
280.0	8.93	10.23	9.22	9.94	9.94	9.22
285.0	9.04	10.28	9.34	9.98	10.08	9.23
290.0	9.06	10.41	9.36	10.10	10.12	9.35
295.0	8.97	10.65	9.28	10.34	10.05	9.57

SCHWARZBECK MESS - ELEKTRONIK

An der Klinge 29 D-69250 Schönau Tel.: 06228/1001 Fax.: (49)6228/1003

STLP 9128 D spezial Gewinn und Antennenfaktor für kurze Messentfernung STLP 9128 D special Gain and Antenna Factor for short Measuring Distances

Frequency	Gain (Iso.) Farfield	Ant.-Fact k Farfield	gi (10 m) Center	k (10m) Center	gi (3m) Center	k (3m) Center
Frequenz	Gewinn Fernfeld	Ant.Faktor Fernfeld	gi (10 m) Mitte	k (10m) Mitte	gi (3m) Mitte	k (3m) Mitte
MHz	dBi	dB/m	dBi	dB/m	dBi	dB/m
300.0	8.83	10.93	9.14	10.62	9.92	9.84
305.0	8.66	11.25	8.98	10.92	9.79	10.12
310.0	8.55	11.50	8.88	11.17	9.69	10.35
315.0	8.50	11.69	8.83	11.35	9.66	10.53
320.0	8.56	11.76	8.90	11.43	9.74	10.59
325.0	8.68	11.78	9.02	11.44	9.87	10.58
330.0	8.83	11.76	9.18	11.41	10.04	10.55
335.0	8.98	11.74	9.33	11.39	10.21	10.51
340.0	9.14	11.71	9.49	11.36	10.38	10.47
345.0	9.23	11.75	9.59	11.39	10.49	10.49
350.0	9.29	11.81	9.65	11.45	10.57	10.53
355.0	9.28	11.94	9.64	11.58	10.56	10.67
360.0	9.19	12.16	9.56	11.79	10.48	10.86
365.0	9.04	12.43	9.41	12.05	10.35	11.12
370.0	8.91	12.67	9.29	12.30	10.24	11.35
375.0	8.81	12.89	9.19	12.51	10.15	11.55
380.0	8.77	13.05	9.15	12.66	10.11	11.70
385.0	8.77	13.16	9.16	12.77	10.13	11.80
390.0	8.78	13.26	9.17	12.87	10.16	11.88
395.0	8.84	13.31	9.23	12.92	10.22	11.93
400.0	8.90	13.36	9.30	12.97	10.29	11.97
405.0	9.02	13.35	9.42	12.95	10.43	11.94
410.0	9.17	13.31	9.57	12.91	10.58	11.89
415.0	9.30	13.28	9.70	12.88	10.73	11.85
420.0	9.39	13.29	9.80	12.89	10.84	11.85
425.0	9.43	13.36	9.84	12.95	10.88	11.91
430.0	9.41	13.48	9.82	13.07	10.87	12.02
435.0	9.35	13.64	9.76	13.23	10.81	12.18
440.0	9.29	13.80	9.71	13.38	10.77	12.32
445.0	9.12	14.07	9.54	13.64	10.62	12.57
450.0	8.89	14.39	9.31	13.97	10.39	12.90
455.0	8.75	14.63	9.18	14.20	10.26	13.12
460.0	8.66	14.82	9.09	14.39	10.17	13.30
465.0	8.58	14.99	9.01	14.56	10.11	13.46
470.0	8.58	15.08	9.01	14.65	10.11	13.55
475.0	8.73	15.02	9.17	14.59	10.28	13.47
480.0	8.82	15.02	9.26	14.59	10.37	13.48
485.0	8.88	15.05	9.32	14.62	10.43	13.51
490.0	9.00	15.02	9.44	14.58	10.57	13.46
495.0	9.19	14.92	9.63	14.48	10.76	13.36
500.0	9.24	14.96	9.69	14.51	10.82	13.38
510.0	9.19	15.18	9.64	14.73	10.79	13.58
520.0	9.01	15.53	9.46	15.08	10.61	13.93
530.0	8.85	15.86	9.30	15.40	10.47	14.24
540.0	8.69	16.18	9.15	15.72	10.33	14.54
550.0	8.44	16.59	8.90	16.12	10.09	14.93
560.0	8.44	16.74	8.90	16.28	10.09	15.09
570.0	8.64	16.70	9.11	16.23	10.31	15.03
580.0	8.94	16.55	9.41	16.08	10.63	14.86

SCHWARZBECK MESS - ELEKTRONIK

An der Klinge 29 D-69250 Schönau Tel.: 06228/1001 Fax.: (49)6228/1003

STLP 9128 D spezial Gewinn und Antennenfaktor für kurze Messentfernung STLP 9128 D special Gain and Antenna Factor for short Measuring Distances

Frequency	Gain (Iso.) Farfield	Ant.-Fact k Farfield	gi (10 m) Center	k (10m) Center	gi (3m) Center	k (3m) Center
Frequenz	Gewinn Fernfeld	Ant.Faktor Fernfeld	gi (10 m) Mitte	k (10m) Mitte	gi (3m) Mitte	k (3m) Mitte
MHz	dBi	dB/m	dBi	dB/m	dBi	dB/m
590.0	9.17	16.47	9.64	15.99	10.86	14.78
600.0	9.35	16.43	9.83	15.96	11.06	14.73
610.0	9.39	16.54	9.87	16.06	11.10	14.83
620.0	9.40	16.67	9.88	16.19	11.12	14.94
630.0	9.34	16.87	9.83	16.38	11.08	15.13
640.0	9.25	17.09	9.74	16.61	10.99	15.35
650.0	9.08	17.40	9.57	16.91	10.84	15.64
660.0	8.93	17.68	9.42	17.19	10.69	15.92
670.0	8.83	17.91	9.33	17.42	10.61	16.13
680.0	8.82	18.05	9.32	17.55	10.60	16.27
690.0	8.82	18.18	9.32	17.68	10.60	16.40
700.0	8.89	18.23	9.39	17.73	10.68	16.44
710.0	8.99	18.26	9.49	17.75	10.78	16.46
720.0	9.13	18.24	9.64	17.73	10.94	16.42
730.0	9.27	18.22	9.78	17.71	11.08	16.40
740.0	9.38	18.22	9.89	17.71	11.21	16.39
750.0	9.40	18.32	9.91	17.81	11.23	16.49
760.0	9.35	18.49	9.86	17.98	11.18	16.66
770.0	9.31	18.64	9.82	18.13	11.16	16.79
780.0	9.27	18.79	9.78	18.28	11.12	16.94
790.0	9.17	19.00	9.68	18.49	11.02	17.15
800.0	9.01	19.27	9.53	18.75	10.88	17.41
810.0	8.85	19.54	9.37	19.02	10.72	17.67
820.0	8.87	19.63	9.39	19.11	10.74	17.76
830.0	9.01	19.59	9.53	19.07	10.89	17.71
840.0	9.21	19.50	9.73	18.97	11.09	17.61
850.0	9.40	19.41	9.92	18.88	11.28	17.52
860.0	9.56	19.35	10.09	18.82	11.46	17.45
870.0	9.71	19.30	10.24	18.77	11.61	17.40
880.0	9.82	19.29	10.35	18.76	11.72	17.39
890.0	9.86	19.35	10.39	18.82	11.76	17.45
900.0	9.81	19.49	10.34	18.96	11.73	17.57
910.0	9.66	19.74	10.19	19.21	11.58	17.82
920.0	9.47	20.03	10.00	19.49	11.39	18.11
930.0	9.32	20.27	9.85	19.74	11.24	18.35
940.0	9.23	20.45	9.77	19.92	11.17	18.51
950.0	9.21	20.56	9.75	20.03	11.15	18.63
960.0	9.13	20.74	9.67	20.20	11.07	18.80
970.0	9.03	20.93	9.57	20.39	10.97	18.99
980.0	8.87	21.17	9.41	20.63	10.83	19.22
990.0	8.80	21.33	9.34	20.79	10.76	19.38
1000.0	8.79	21.43	9.33	20.89	10.75	19.47
1020.0	8.92	21.47	9.46	20.93	10.88	19.52
1040.0	9.18	21.38	9.73	20.83	11.15	19.41
1060.0	9.54	21.19	10.09	20.64	11.51	19.21
1080.0	9.68	21.21	10.23	20.66	11.67	19.22
1100.0	9.77	21.28	10.32	20.73	11.76	19.29
1120.0	9.85	21.35	10.40	20.80	11.84	19.36
1140.0	9.83	21.53	10.39	20.97	11.84	19.52

SCHWARZBECK MESS - ELEKTRONIK

An der Klinge 29 D-69250 Schönau Tel.: 06228/1001 Fax.: (49)6228/1003



ABSOLUTE EMC Lic.
Covering sales in North America
United States, Mexico, & Canada

absolute-emc.com
Phone:703-774-7505
info@absolute-emc.com

STLP 9128 D spezial Gewinn und Antennenfaktor für kurze Messentfernung
STLP 9128 D special Gain and Antenna Factor for short Measuring Distances

Frequency	Gain (Iso.) Farfield	Ant.-Fact k Farfield	gi (10 m) Center	k (10m) Center	gi (3m) Center	k (3m) Center
Frequenz	Gewinn Fernfeld	Ant.Faktor Fernfeld	gi (10 m) Mitte	k (10m) Mitte	gi (3m) Mitte	k (3m) Mitte
MHz	dBi	dB/m	dBi	dB/m	dBi	dB/m
1160.0	9.61	21.90	10.17	21.34	11.62	19.89
1180.0	9.46	22.20	10.02	21.64	11.47	20.19
1200.0	9.77	22.03	10.33	21.47	11.80	20.00
1220.0	9.86	22.09	10.42	21.53	11.89	20.06
1240.0	9.88	22.21	10.44	21.65	11.91	20.18
1260.0	10.06	22.17	10.62	21.61	12.09	20.14
1280.0	10.42	21.94	10.99	21.38	12.47	19.90
1300.0	10.53	21.97	11.10	21.40	12.58	19.92
1320.0	10.47	22.16	11.04	21.60	12.52	20.11
1340.0	10.28	22.48	10.85	21.92	12.33	20.43
1360.0	10.29	22.60	10.86	22.03	12.36	20.53
1380.0	10.24	22.78	10.81	22.21	12.31	20.71
1400.0	10.13	23.01	10.70	22.44	12.20	20.95
1420.0	10.00	23.27	10.57	22.70	12.07	21.20
1440.0	9.91	23.48	10.48	22.91	11.98	21.41
1460.0	9.84	23.67	10.41	23.09	11.92	21.58
1480.0	9.70	23.93	10.27	23.35	11.78	21.84
1500.0	9.89	23.85	10.46	23.28	11.97	21.77
1520.0	10.21	23.65	10.78	23.07	12.29	21.56
1540.0	10.51	23.46	11.08	22.89	12.59	21.38
1560.0	10.64	23.44	11.22	22.86	12.74	21.34
1580.0	10.67	23.52	11.25	22.94	12.77	21.42
1600.0	10.65	23.65	11.23	23.07	12.75	21.55
1620.0	10.78	23.63	11.36	23.05	12.88	21.53
1640.0	10.80	23.72	11.38	23.14	12.90	21.61
1660.0	10.69	23.93	11.27	23.35	12.79	21.83
1680.0	10.62	24.11	11.20	23.52	12.74	21.99
1700.0	10.46	24.37	11.04	23.79	12.58	22.25
1720.0	10.22	24.71	10.80	24.13	12.34	22.59
1740.0	10.19	24.84	10.77	24.26	12.31	22.72
1760.0	10.25	24.88	10.83	24.30	12.37	22.76
1780.0	10.47	24.76	11.05	24.17	12.59	22.64
1800.0	10.61	24.72	11.19	24.13	12.73	22.59
1820.0	10.47	24.95	11.06	24.36	12.61	22.81
1840.0	10.45	25.07	11.04	24.48	12.59	22.93
1860.0	10.49	25.12	11.08	24.53	12.63	22.98
1880.0	10.57	25.13	11.16	24.54	12.71	22.99
1900.0	10.51	25.29	11.10	24.70	12.65	23.15
1920.0	10.36	25.53	10.95	24.94	12.50	23.39
1940.0	10.51	25.47	11.10	24.88	12.65	23.33
1960.0	10.65	25.42	11.24	24.83	12.79	23.28
1980.0	10.74	25.41	11.33	24.82	12.90	23.26
2000.0	10.76	25.48	11.35	24.89	12.92	23.32
2050.0	10.69	25.77	11.28	25.17	12.85	23.61
2100.0	10.23	26.43	10.82	25.84	12.39	24.28
2150.0	10.81	26.06	11.40	25.47	12.97	23.90
2200.0	11.02	26.05	11.62	25.45	13.20	23.87
2250.0	10.54	26.72	11.14	26.13	12.72	24.55
2300.0	10.76	26.69	11.36	26.10	12.94	24.52



ABSOLUTE EMC Lic.
Covering sales in North America
United States, Mexico, & Canada

absolute-emc.com
Phone:703-774-7505
info@absolute-emc.com

SCHWARZBECK MESS - ELEKTRONIK

An der Klinge 29 D-69250 Schönau Tel.: 06228/1001 Fax.: (49)6228/1003

STLP 9128 D spezial Gewinn und Antennenfaktor für kurze Messentfernung STLP 9128 D special Gain and Antenna Factor for short Measuring Distances

Frequency	Gain (Iso.) Farfield	Ant.-Fact k Farfield	gi (10 m) Center	k (10m) Center	gi (3m) Center	k (3m) Center
Frequenz	Gewinn Fernfeld	Ant.Faktor Fernfeld	gi (10 m) Mitte	k (10m) Mitte	gi (3m) Mitte	k (3m) Mitte
MHz	dBi	dB/m	dBi	dB/m	dBi	dB/m
2350.0	10.73	26.91	11.33	26.31	12.91	24.73
2400.0	10.85	26.97	11.45	26.38	13.03	24.80
2450.0	11.24	26.76	11.84	26.16	13.44	24.57
2500.0	11.61	26.57	12.21	25.97	13.81	24.37
2550.0	11.79	26.56	12.39	25.96	13.99	24.37
2600.0	11.75	26.77	12.35	26.17	13.95	24.57
2650.0	11.75	26.93	12.35	26.33	13.95	24.74
2700.0	11.06	27.79	11.66	27.18	13.26	25.59
2750.0	10.62	28.39	11.23	27.78	12.83	26.17
2800.0	10.63	28.53	11.24	27.93	12.84	26.32
2850.0	10.79	28.53	11.40	27.92	13.00	26.31
2900.0	11.03	28.44	11.64	27.83	13.24	26.22
2950.0	11.01	28.61	11.62	28.00	13.22	26.39
3000.0	11.39	28.37	12.00	27.77	13.60	26.16
3050.0	11.68	28.23	12.29	27.62	13.89	26.01
3100.0	11.36	28.69	11.97	28.08	13.57	26.47
3150.0	11.71	28.48	12.32	27.87	13.92	26.26
3200.0	12.23	28.09	12.84	27.48	14.46	25.86
3250.0	12.32	28.14	12.93	27.53	14.55	25.91
3300.0	11.82	28.77	12.43	28.16	14.05	26.54
3350.0	11.46	29.26	12.07	28.65	13.69	27.03
3400.0	11.51	29.34	12.12	28.73	13.74	27.11
3450.0	11.03	29.95	11.64	29.33	13.26	27.71
3500.0	10.69	30.41	11.30	29.80	12.92	28.18
3550.0	10.70	30.52	11.31	29.91	12.93	28.29
3600.0	10.38	30.97	10.99	30.35	12.61	28.73
3650.0	10.65	30.82	11.26	30.20	12.88	28.58
3700.0	10.53	31.05	11.15	30.44	12.78	28.80
3750.0	11.02	30.68	11.64	30.06	13.27	28.43
3800.0	11.12	30.70	11.74	30.08	13.37	28.44
3850.0	10.43	31.50	11.05	30.88	12.68	29.25
3900.0	10.43	31.61	11.05	30.99	12.68	29.36
3950.0	9.87	32.28	10.49	31.67	12.12	30.03
4000.0	9.80	32.46	10.42	31.84	12.05	30.21

SCHWARZBECK MESS - ELEKTRONIK

An der Klinge 29 D-69250 Schönau Tel.: 06228/1001 Fax.: (49)6228/1003

STLP 9128 D spezial Gewinn und Antennenfaktor für kurze Messentfernung
STLP 9128 D special Gain and Antenna Factor for short Measuring Distances

Bezugspunkt: Mitte
Reference Point: Center

