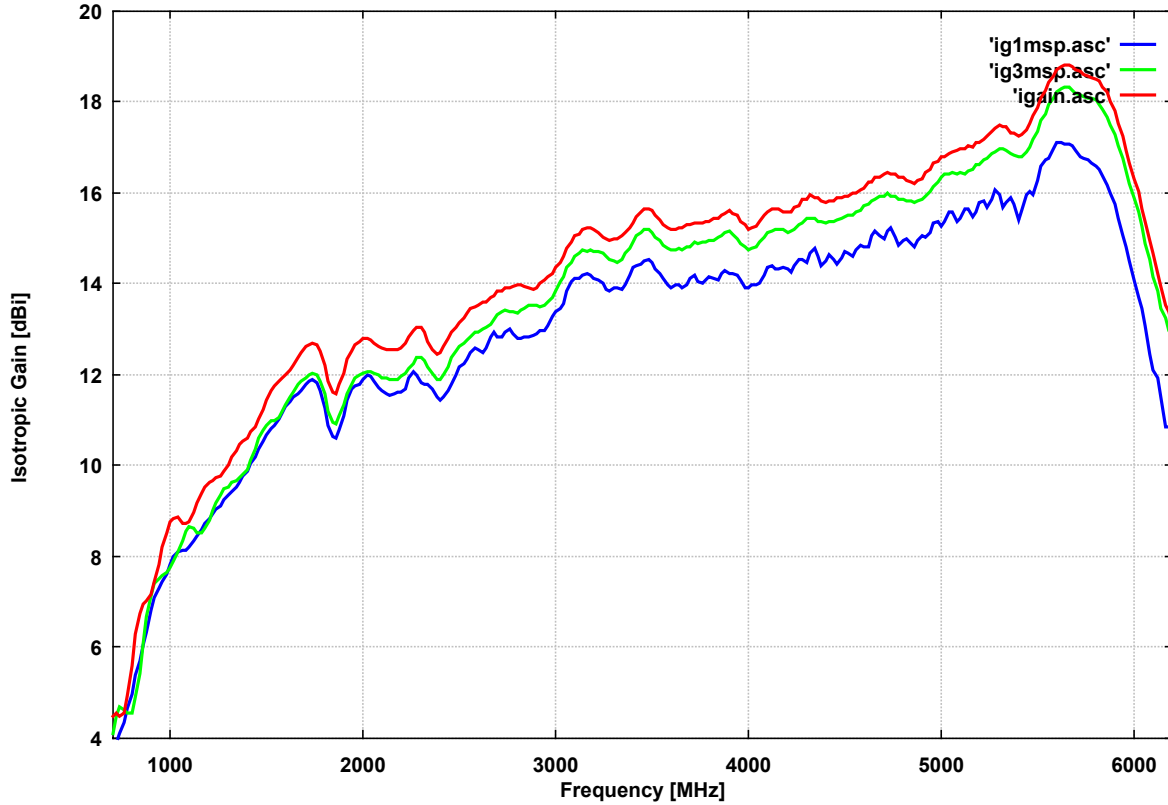


SCHWARZBECK MESS - ELEKTRONIK

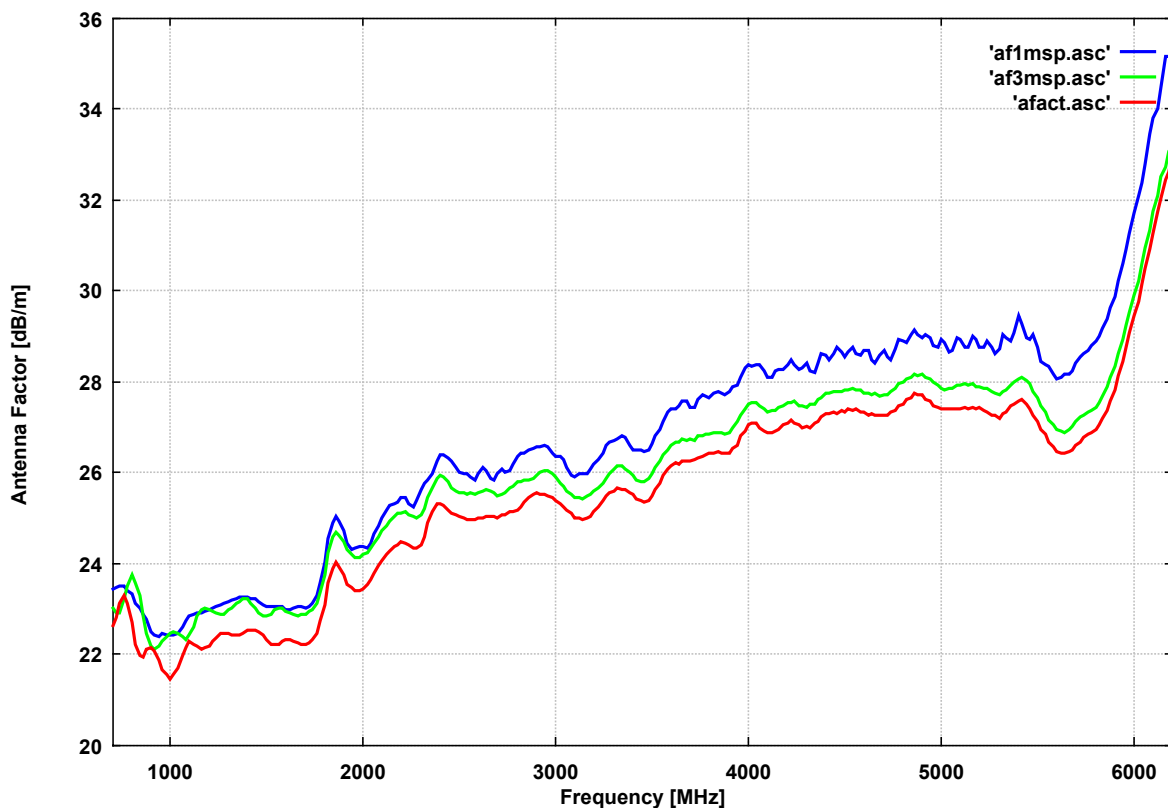
An der Klinge 29 D-69250 Schönau Tel.: +49 6228 1001
Fax.: +49 6228 1003 E-mail: office@schwarzbeck.de

Doppelsteg Breitband Hornantenne BBHA 9120 LFA Double Ridged Broadband Horn BBHA 9120 LFA

Isotropgewinn (Fernfeld, 1 m Apertur, 3 m Apertur)
Isotropic Gain (Farfield, 1 m Aperture, 3 m Aperture)



Antennen-Wandlungsmaß (Fernfeld, 1 m Apertur, 3 m Apertur)
Antenna Factor (Farfield, 1 m Aperture, 3 m Aperture)



ABSOLUTE EMC LLC.
Covering sales in North America
United States, Mexico, & Canada

absolute-emc.com
Phone: 703-774-7505
info@absolute-emc.com

SCHWARZBECK MESS - ELEKTRONIK

An der Klinge 29 D-69250 Schönau Tel.: +49 6228 1001
Fax.: +49 6228 1003 E-mail: office@schwarzbeck.de

Doppelsteg Breitband Hornantenne BBHA 9120 LFA *Double Ridged Broadband Horn BBHA 9120 LFA*

| Frequency MHz | Gain(Isotr.) 1 m Apert. dBi | Ant.-Factor 1 m Apert. dB/m | Gain(Isotr.) 3 m Apert. dBi | Ant.-Factor 3 m Apert. dB/m | Gain(Isotr.) Farfield dBi | Ant.-Factor Farfield dB/m |
|------------------|-----------------------------------|-----------------------------------|-----------------------------------|-----------------------------------|---------------------------------|---------------------------------|
| 680.00 | 3.10 | 23.77 | 3.12 | 23.75 | 4.03 | 22.84 |
| 700.00 | 3.71 | 23.42 | 4.11 | 23.01 | 4.48 | 22.64 |
| 720.00 | 3.90 | 23.47 | 4.47 | 22.90 | 4.55 | 22.82 |
| 740.00 | 4.11 | 23.49 | 4.70 | 22.91 | 4.48 | 23.13 |
| 760.00 | 4.32 | 23.52 | 4.60 | 23.23 | 4.56 | 23.28 |
| 780.00 | 4.66 | 23.41 | 4.55 | 23.51 | 4.93 | 23.13 |
| 800.00 | 4.95 | 23.33 | 4.53 | 23.75 | 5.57 | 22.71 |
| 820.00 | 5.39 | 23.11 | 4.90 | 23.59 | 6.27 | 22.22 |
| 840.00 | 5.68 | 23.02 | 5.42 | 23.29 | 6.73 | 21.98 |
| 860.00 | 6.03 | 22.88 | 6.08 | 22.83 | 6.96 | 21.95 |
| 880.00 | 6.33 | 22.78 | 6.65 | 22.46 | 7.01 | 22.10 |
| 900.00 | 6.79 | 22.51 | 7.13 | 22.17 | 7.15 | 22.16 |
| 920.00 | 7.08 | 22.41 | 7.39 | 22.10 | 7.44 | 22.06 |
| 940.00 | 7.30 | 22.38 | 7.52 | 22.17 | 7.82 | 21.86 |
| 960.00 | 7.42 | 22.45 | 7.58 | 22.29 | 8.22 | 21.65 |
| 980.00 | 7.60 | 22.44 | 7.65 | 22.39 | 8.51 | 21.54 |
| 1000.00 | 7.81 | 22.41 | 7.76 | 22.46 | 8.77 | 21.45 |
| 1020.00 | 7.98 | 22.41 | 7.88 | 22.51 | 8.84 | 21.55 |
| 1040.00 | 8.09 | 22.47 | 8.10 | 22.47 | 8.87 | 21.69 |
| 1060.00 | 8.12 | 22.61 | 8.33 | 22.40 | 8.74 | 21.98 |
| 1080.00 | 8.15 | 22.74 | 8.56 | 22.33 | 8.74 | 22.15 |
| 1100.00 | 8.22 | 22.83 | 8.64 | 22.41 | 8.77 | 22.28 |
| 1120.00 | 8.32 | 22.89 | 8.61 | 22.59 | 8.97 | 22.23 |
| 1140.00 | 8.45 | 22.91 | 8.53 | 22.83 | 9.16 | 22.19 |
| 1160.00 | 8.58 | 22.93 | 8.52 | 22.98 | 9.40 | 22.11 |
| 1180.00 | 8.72 | 22.94 | 8.63 | 23.03 | 9.53 | 22.13 |
| 1200.00 | 8.83 | 22.98 | 8.81 | 22.99 | 9.63 | 22.17 |
| 1220.00 | 8.92 | 23.03 | 9.00 | 22.94 | 9.65 | 22.29 |
| 1240.00 | 9.02 | 23.07 | 9.19 | 22.90 | 9.72 | 22.37 |
| 1260.00 | 9.12 | 23.10 | 9.35 | 22.87 | 9.76 | 22.47 |
| 1280.00 | 9.24 | 23.12 | 9.47 | 22.89 | 9.88 | 22.48 |
| 1300.00 | 9.35 | 23.15 | 9.53 | 22.97 | 10.02 | 22.48 |
| 1320.00 | 9.43 | 23.20 | 9.61 | 23.02 | 10.19 | 22.44 |
| 1340.00 | 9.53 | 23.23 | 9.66 | 23.11 | 10.34 | 22.42 |
| 1360.00 | 9.63 | 23.26 | 9.73 | 23.16 | 10.46 | 22.43 |
| 1380.00 | 9.76 | 23.26 | 9.80 | 23.22 | 10.55 | 22.47 |
| 1400.00 | 9.87 | 23.27 | 9.92 | 23.22 | 10.61 | 22.53 |
| 1420.00 | 10.03 | 23.24 | 10.13 | 23.13 | 10.73 | 22.54 |
| 1440.00 | 10.18 | 23.21 | 10.36 | 23.03 | 10.85 | 22.54 |
| 1460.00 | 10.36 | 23.15 | 10.59 | 22.92 | 11.01 | 22.50 |
| 1480.00 | 10.53 | 23.09 | 10.77 | 22.85 | 11.21 | 22.41 |
| 1500.00 | 10.68 | 23.06 | 10.90 | 22.84 | 11.44 | 22.31 |
| 1520.00 | 10.81 | 23.05 | 10.98 | 22.88 | 11.64 | 22.22 |
| 1540.00 | 10.90 | 23.07 | 11.00 | 22.97 | 11.76 | 22.21 |
| 1560.00 | 11.01 | 23.07 | 11.07 | 23.01 | 11.86 | 22.22 |
| 1580.00 | 11.15 | 23.05 | 11.19 | 23.01 | 11.92 | 22.27 |
| 1600.00 | 11.30 | 23.00 | 11.35 | 22.96 | 11.99 | 22.31 |
| 1620.00 | 11.42 | 22.99 | 11.51 | 22.90 | 12.09 | 22.32 |
| 1640.00 | 11.50 | 23.02 | 11.63 | 22.89 | 12.21 | 22.30 |
| 1660.00 | 11.57 | 23.05 | 11.77 | 22.85 | 12.37 | 22.25 |
| 1680.00 | 11.66 | 23.06 | 11.85 | 22.87 | 12.49 | 22.23 |



ABSOLUTE EMC Lic.
Covering sales in North America
United States, Mexico, & Canada

absolute-emc.com
Phone: 703-774-7505
info@absolute-emc.com

SCHWARZBECK MESS - ELEKTRONIK

An der Klinge 29 D-69250 Schönau Tel.: +49 6228 1001
Fax.: +49 6228 1003 E-mail: office@schwarzbeck.de

Doppelsteg Breitband Hornantenne BBHA 9120 LFA Double Ridged Broadband Horn BBHA 9120 LFA

| Frequency | Gain(Isotr.) 1 m Apert. | Ant.-Factor 1 m Apert. | Gain(Isotr.) 3 m Apert. | Ant.-Factor 3 m Apert. | Gain(Isotr.) Farfield | Ant.-Factor Farfield |
|-----------|----------------------------|---------------------------|----------------------------|---------------------------|--------------------------|-------------------------|
| MHz | dB | dB/m | dB | dB/m | dB | dB/m |
| 1700.00 | 11.80 | 23.03 | 11.94 | 22.89 | 12.61 | 22.21 |
| 1720.00 | 11.87 | 23.06 | 11.98 | 22.95 | 12.67 | 22.26 |
| 1740.00 | 11.89 | 23.14 | 12.03 | 23.00 | 12.70 | 22.33 |
| 1760.00 | 11.82 | 23.31 | 12.00 | 23.13 | 12.66 | 22.47 |
| 1780.00 | 11.64 | 23.59 | 11.87 | 23.36 | 12.51 | 22.72 |
| 1800.00 | 11.28 | 24.04 | 11.57 | 23.76 | 12.22 | 23.10 |
| 1820.00 | 10.87 | 24.55 | 11.20 | 24.23 | 11.85 | 23.57 |
| 1840.00 | 10.62 | 24.90 | 10.94 | 24.58 | 11.62 | 23.90 |
| 1860.00 | 10.59 | 25.02 | 10.91 | 24.70 | 11.57 | 24.04 |
| 1880.00 | 10.76 | 24.94 | 11.09 | 24.61 | 11.79 | 23.91 |
| 1900.00 | 11.08 | 24.71 | 11.33 | 24.47 | 12.04 | 23.76 |
| 1920.00 | 11.45 | 24.43 | 11.58 | 24.31 | 12.34 | 23.55 |
| 1940.00 | 11.68 | 24.29 | 11.77 | 24.21 | 12.51 | 23.46 |
| 1960.00 | 11.74 | 24.33 | 11.92 | 24.15 | 12.67 | 23.40 |
| 1980.00 | 11.78 | 24.38 | 12.00 | 24.15 | 12.74 | 23.41 |
| 2000.00 | 11.88 | 24.36 | 12.05 | 24.19 | 12.79 | 23.45 |
| 2020.00 | 11.98 | 24.35 | 12.08 | 24.25 | 12.80 | 23.53 |
| 2040.00 | 11.96 | 24.46 | 12.07 | 24.34 | 12.77 | 23.64 |
| 2060.00 | 11.84 | 24.66 | 12.04 | 24.46 | 12.71 | 23.78 |
| 2080.00 | 11.73 | 24.85 | 11.99 | 24.59 | 12.63 | 23.95 |
| 2100.00 | 11.65 | 25.01 | 11.94 | 24.73 | 12.59 | 24.08 |
| 2120.00 | 11.58 | 25.17 | 11.91 | 24.84 | 12.56 | 24.19 |
| 2140.00 | 11.54 | 25.28 | 11.88 | 24.94 | 12.56 | 24.27 |
| 2160.00 | 11.59 | 25.32 | 11.89 | 25.02 | 12.54 | 24.37 |
| 2180.00 | 11.62 | 25.37 | 11.90 | 25.09 | 12.57 | 24.42 |
| 2200.00 | 11.62 | 25.45 | 11.96 | 25.11 | 12.60 | 24.47 |
| 2220.00 | 11.69 | 25.46 | 12.02 | 25.13 | 12.70 | 24.44 |
| 2240.00 | 11.91 | 25.31 | 12.15 | 25.07 | 12.82 | 24.41 |
| 2260.00 | 12.06 | 25.24 | 12.26 | 25.04 | 12.97 | 24.34 |
| 2280.00 | 12.00 | 25.38 | 12.38 | 25.00 | 13.05 | 24.33 |
| 2300.00 | 11.82 | 25.63 | 12.37 | 25.08 | 13.05 | 24.41 |
| 2320.00 | 11.77 | 25.76 | 12.32 | 25.21 | 12.94 | 24.59 |
| 2340.00 | 11.77 | 25.83 | 12.16 | 25.45 | 12.72 | 24.88 |
| 2360.00 | 11.69 | 25.99 | 12.02 | 25.66 | 12.55 | 25.13 |
| 2380.00 | 11.50 | 26.25 | 11.88 | 25.87 | 12.43 | 25.33 |
| 2400.00 | 11.45 | 26.38 | 11.88 | 25.94 | 12.49 | 25.33 |
| 2420.00 | 11.51 | 26.38 | 11.99 | 25.91 | 12.61 | 25.28 |
| 2440.00 | 11.65 | 26.32 | 12.18 | 25.79 | 12.79 | 25.18 |
| 2460.00 | 11.79 | 26.25 | 12.37 | 25.67 | 12.92 | 25.12 |
| 2480.00 | 12.00 | 26.11 | 12.51 | 25.59 | 13.03 | 25.08 |
| 2500.00 | 12.17 | 26.01 | 12.63 | 25.55 | 13.13 | 25.05 |
| 2520.00 | 12.26 | 25.98 | 12.69 | 25.55 | 13.24 | 25.00 |
| 2540.00 | 12.33 | 25.99 | 12.78 | 25.53 | 13.35 | 24.97 |
| 2560.00 | 12.48 | 25.90 | 12.84 | 25.54 | 13.44 | 24.95 |
| 2580.00 | 12.60 | 25.85 | 12.93 | 25.53 | 13.50 | 24.95 |
| 2600.00 | 12.55 | 25.97 | 12.95 | 25.57 | 13.52 | 25.00 |
| 2620.00 | 12.47 | 26.12 | 13.00 | 25.58 | 13.59 | 25.00 |
| 2640.00 | 12.59 | 26.06 | 13.04 | 25.61 | 13.61 | 25.04 |
| 2660.00 | 12.83 | 25.89 | 13.12 | 25.60 | 13.70 | 25.02 |
| 2680.00 | 12.93 | 25.85 | 13.22 | 25.56 | 13.73 | 25.05 |
| 2700.00 | 12.85 | 25.99 | 13.34 | 25.50 | 13.84 | 25.01 |
| 2720.00 | 12.83 | 26.08 | 13.40 | 25.51 | 13.85 | 25.06 |



ABSOLUTE EMC Lic.
Covering sales in North America
United States, Mexico, & Canada

absolute-emc.com
Phone: 703-774-7505
info@absolute-emc.com

SCHWARZBECK MESS - ELEKTRONIK

An der Klinge 29 D-69250 Schönau Tel.: +49 6228 1001
Fax.: +49 6228 1003 E-mail: office@schwarzbeck.de

Doppelsteg Breitband Hornantenne BBHA 9120 LFA *Double Ridged Broadband Horn BBHA 9120 LFA*

| Frequency MHz | Gain(Isotr.) 1 m Apert. dBi | Ant.-Factor 1 m Apert. dB/m | Gain(Isotr.) 3 m Apert. dBi | Ant.-Factor 3 m Apert. dB/m | Gain(Isotr.) Farfield dBi | Ant.-Factor Farfield dB/m |
|------------------|-----------------------------------|-----------------------------------|-----------------------------------|-----------------------------------|---------------------------------|---------------------------------|
| 2740.00 | 12.95 | 26.02 | 13.42 | 25.55 | 13.90 | 25.08 |
| 2760.00 | 13.00 | 26.04 | 13.39 | 25.65 | 13.90 | 25.14 |
| 2780.00 | 12.91 | 26.19 | 13.39 | 25.71 | 13.96 | 25.14 |
| 2800.00 | 12.79 | 26.37 | 13.37 | 25.79 | 13.98 | 25.19 |
| 2820.00 | 12.80 | 26.43 | 13.42 | 25.81 | 13.99 | 25.24 |
| 2840.00 | 12.84 | 26.44 | 13.46 | 25.83 | 13.95 | 25.34 |
| 2860.00 | 12.84 | 26.50 | 13.51 | 25.84 | 13.91 | 25.44 |
| 2880.00 | 12.86 | 26.54 | 13.52 | 25.89 | 13.89 | 25.51 |
| 2900.00 | 12.91 | 26.56 | 13.52 | 25.95 | 13.92 | 25.55 |
| 2920.00 | 12.96 | 26.56 | 13.50 | 26.02 | 14.01 | 25.52 |
| 2940.00 | 12.98 | 26.61 | 13.54 | 26.04 | 14.08 | 25.51 |
| 2960.00 | 13.08 | 26.56 | 13.58 | 26.06 | 14.17 | 25.48 |
| 2980.00 | 13.28 | 26.42 | 13.72 | 25.99 | 14.24 | 25.46 |
| 3000.00 | 13.41 | 26.35 | 13.85 | 25.91 | 14.37 | 25.40 |
| 3020.00 | 13.47 | 26.35 | 14.04 | 25.78 | 14.49 | 25.33 |
| 3040.00 | 13.57 | 26.30 | 14.17 | 25.71 | 14.62 | 25.25 |
| 3060.00 | 13.83 | 26.10 | 14.35 | 25.58 | 14.77 | 25.16 |
| 3080.00 | 14.04 | 25.96 | 14.47 | 25.53 | 14.91 | 25.09 |
| 3100.00 | 14.12 | 25.92 | 14.61 | 25.44 | 15.05 | 25.00 |
| 3120.00 | 14.12 | 25.98 | 14.66 | 25.45 | 15.11 | 24.99 |
| 3140.00 | 14.19 | 25.97 | 14.73 | 25.43 | 15.21 | 24.95 |
| 3160.00 | 14.23 | 25.99 | 14.72 | 25.49 | 15.22 | 25.00 |
| 3180.00 | 14.20 | 26.07 | 14.74 | 25.53 | 15.23 | 25.04 |
| 3200.00 | 14.13 | 26.19 | 14.72 | 25.60 | 15.18 | 25.15 |
| 3220.00 | 14.08 | 26.30 | 14.71 | 25.67 | 15.12 | 25.26 |
| 3240.00 | 14.00 | 26.43 | 14.67 | 25.76 | 15.04 | 25.39 |
| 3260.00 | 13.89 | 26.59 | 14.62 | 25.86 | 15.00 | 25.49 |
| 3280.00 | 13.86 | 26.68 | 14.55 | 25.99 | 14.96 | 25.57 |
| 3300.00 | 13.91 | 26.69 | 14.50 | 26.09 | 14.99 | 25.60 |
| 3320.00 | 13.91 | 26.73 | 14.48 | 26.16 | 15.00 | 25.65 |
| 3340.00 | 13.89 | 26.80 | 14.55 | 26.15 | 15.07 | 25.62 |
| 3360.00 | 13.99 | 26.76 | 14.66 | 26.09 | 15.13 | 25.62 |
| 3380.00 | 14.20 | 26.60 | 14.79 | 26.01 | 15.24 | 25.56 |
| 3400.00 | 14.36 | 26.49 | 14.92 | 25.93 | 15.34 | 25.51 |
| 3420.00 | 14.41 | 26.49 | 15.05 | 25.85 | 15.47 | 25.43 |
| 3440.00 | 14.44 | 26.51 | 15.14 | 25.81 | 15.57 | 25.38 |
| 3460.00 | 14.52 | 26.48 | 15.20 | 25.80 | 15.64 | 25.36 |
| 3480.00 | 14.55 | 26.50 | 15.18 | 25.87 | 15.65 | 25.40 |
| 3500.00 | 14.47 | 26.63 | 15.12 | 25.98 | 15.61 | 25.50 |
| 3520.00 | 14.34 | 26.81 | 15.03 | 26.12 | 15.53 | 25.62 |
| 3540.00 | 14.24 | 26.96 | 14.95 | 26.25 | 15.42 | 25.78 |
| 3560.00 | 14.12 | 27.13 | 14.87 | 26.38 | 15.32 | 25.93 |
| 3580.00 | 13.98 | 27.32 | 14.78 | 26.52 | 15.22 | 26.08 |
| 3600.00 | 13.93 | 27.42 | 14.76 | 26.59 | 15.20 | 26.15 |
| 3620.00 | 13.98 | 27.41 | 14.73 | 26.67 | 15.18 | 26.22 |
| 3640.00 | 13.99 | 27.46 | 14.77 | 26.67 | 15.24 | 26.20 |
| 3660.00 | 13.92 | 27.57 | 14.76 | 26.73 | 15.24 | 26.25 |
| 3680.00 | 13.97 | 27.57 | 14.83 | 26.71 | 15.29 | 26.24 |
| 3700.00 | 14.13 | 27.45 | 14.83 | 26.75 | 15.31 | 26.27 |
| 3720.00 | 14.18 | 27.45 | 14.91 | 26.72 | 15.35 | 26.28 |
| 3740.00 | 14.06 | 27.62 | 14.88 | 26.80 | 15.35 | 26.32 |
| 3760.00 | 14.00 | 27.72 | 14.92 | 26.81 | 15.35 | 26.37 |



ABSOLUTE EMC Lic.
Covering sales in North America
United States, Mexico, & Canada

absolute-emc.com
Phone: 703-774-7505
info@absolute-emc.com

SCHWARZBECK MESS - ELEKTRONIK

An der Klinge 29 D-69250 Schönau Tel.: +49 6228 1001
Fax.: +49 6228 1003 E-mail: office@schwarzbeck.de

Doppelsteg Breitband Hornantenne BBHA 9120 LFA *Double Ridged Broadband Horn BBHA 9120 LFA*

| Frequency | Gain(Isotr.) 1 m Apert. | Ant.-Factor 1 m Apert. | Gain(Isotr.) 3 m Apert. | Ant.-Factor 3 m Apert. | Gain(Isotr.) Farfield | Ant.-Factor Farfield |
|-----------|----------------------------|---------------------------|----------------------------|---------------------------|--------------------------|-------------------------|
| MHz | dB | dB/m | dB | dB/m | dB | dB/m |
| 3780.00 | 14.09 | 27.68 | 14.91 | 26.86 | 15.38 | 26.39 |
| 3800.00 | 14.16 | 27.65 | 14.97 | 26.85 | 15.39 | 26.42 |
| 3820.00 | 14.12 | 27.74 | 14.97 | 26.89 | 15.44 | 26.42 |
| 3840.00 | 14.10 | 27.80 | 15.02 | 26.89 | 15.45 | 26.46 |
| 3860.00 | 14.22 | 27.74 | 15.08 | 26.87 | 15.53 | 26.42 |
| 3880.00 | 14.28 | 27.72 | 15.14 | 26.86 | 15.56 | 26.43 |
| 3900.00 | 14.24 | 27.80 | 15.15 | 26.90 | 15.61 | 26.43 |
| 3920.00 | 14.21 | 27.88 | 15.09 | 27.00 | 15.56 | 26.53 |
| 3940.00 | 14.19 | 27.94 | 15.01 | 27.12 | 15.52 | 26.61 |
| 3960.00 | 14.08 | 28.09 | 14.90 | 27.27 | 15.37 | 26.80 |
| 3980.00 | 13.92 | 28.29 | 14.83 | 27.39 | 15.30 | 26.92 |
| 4000.00 | 13.90 | 28.36 | 14.75 | 27.51 | 15.19 | 27.07 |
| 4020.00 | 13.97 | 28.33 | 14.77 | 27.53 | 15.22 | 27.08 |
| 4040.00 | 13.99 | 28.36 | 14.80 | 27.55 | 15.26 | 27.09 |
| 4060.00 | 14.02 | 28.37 | 14.92 | 27.47 | 15.39 | 27.00 |
| 4080.00 | 14.20 | 28.23 | 15.02 | 27.41 | 15.51 | 26.93 |
| 4100.00 | 14.38 | 28.09 | 15.13 | 27.34 | 15.59 | 26.88 |
| 4120.00 | 14.40 | 28.12 | 15.16 | 27.36 | 15.65 | 26.87 |
| 4140.00 | 14.32 | 28.24 | 15.20 | 27.36 | 15.65 | 26.91 |
| 4160.00 | 14.32 | 28.28 | 15.18 | 27.43 | 15.65 | 26.95 |
| 4180.00 | 14.37 | 28.28 | 15.18 | 27.47 | 15.59 | 27.06 |
| 4200.00 | 14.32 | 28.37 | 15.12 | 27.56 | 15.59 | 27.10 |
| 4220.00 | 14.26 | 28.47 | 15.17 | 27.56 | 15.58 | 27.15 |
| 4240.00 | 14.39 | 28.37 | 15.20 | 27.57 | 15.69 | 27.08 |
| 4260.00 | 14.54 | 28.27 | 15.32 | 27.49 | 15.73 | 27.07 |
| 4280.00 | 14.53 | 28.32 | 15.35 | 27.49 | 15.86 | 26.98 |
| 4300.00 | 14.49 | 28.40 | 15.44 | 27.45 | 15.87 | 27.02 |
| 4320.00 | 14.68 | 28.25 | 15.43 | 27.50 | 15.95 | 26.98 |
| 4340.00 | 14.77 | 28.20 | 15.46 | 27.51 | 15.89 | 27.08 |
| 4360.00 | 14.60 | 28.41 | 15.39 | 27.62 | 15.88 | 27.13 |
| 4380.00 | 14.41 | 28.64 | 15.39 | 27.66 | 15.83 | 27.22 |
| 4400.00 | 14.51 | 28.58 | 15.34 | 27.75 | 15.80 | 27.29 |
| 4420.00 | 14.64 | 28.49 | 15.38 | 27.75 | 15.84 | 27.29 |
| 4440.00 | 14.53 | 28.63 | 15.38 | 27.79 | 15.84 | 27.33 |
| 4460.00 | 14.42 | 28.78 | 15.42 | 27.79 | 15.90 | 27.31 |
| 4480.00 | 14.57 | 28.67 | 15.44 | 27.80 | 15.88 | 27.37 |
| 4500.00 | 14.71 | 28.57 | 15.47 | 27.82 | 15.93 | 27.35 |
| 4520.00 | 14.67 | 28.65 | 15.50 | 27.83 | 15.92 | 27.40 |
| 4540.00 | 14.61 | 28.75 | 15.52 | 27.84 | 15.99 | 27.38 |
| 4560.00 | 14.76 | 28.64 | 15.58 | 27.82 | 15.99 | 27.41 |
| 4580.00 | 14.85 | 28.58 | 15.62 | 27.82 | 16.09 | 27.34 |
| 4600.00 | 14.80 | 28.68 | 15.72 | 27.76 | 16.12 | 27.35 |
| 4620.00 | 14.81 | 28.71 | 15.75 | 27.76 | 16.24 | 27.28 |
| 4640.00 | 15.05 | 28.50 | 15.84 | 27.71 | 16.26 | 27.29 |
| 4660.00 | 15.16 | 28.42 | 15.85 | 27.74 | 16.34 | 27.25 |
| 4680.00 | 15.05 | 28.58 | 15.93 | 27.69 | 16.36 | 27.26 |
| 4700.00 | 14.98 | 28.68 | 15.94 | 27.73 | 16.41 | 27.25 |
| 4720.00 | 15.16 | 28.54 | 15.99 | 27.71 | 16.44 | 27.26 |
| 4740.00 | 15.23 | 28.50 | 15.93 | 27.80 | 16.41 | 27.33 |
| 4760.00 | 15.03 | 28.74 | 15.92 | 27.85 | 16.40 | 27.37 |
| 4780.00 | 14.86 | 28.95 | 15.86 | 27.95 | 16.34 | 27.47 |
| 4800.00 | 14.95 | 28.90 | 15.86 | 27.99 | 16.34 | 27.51 |



ABSOLUTE EMC Lic.
Covering sales in North America
United States, Mexico, & Canada

absolute-emc.com
Phone: 703-774-7505
info@absolute-emc.com

SCHWARZBECK MESS - ELEKTRONIK

An der Klinge 29 D-69250 Schönau Tel.: +49 6228 1001
Fax.: +49 6228 1003 E-mail: office@schwarzbeck.de

Doppelsteg Breitband Hornantenne BBHA 9120 LFA *Double Ridged Broadband Horn BBHA 9120 LFA*

| Frequency | Gain(Isotr.) 1 m Apert. | Ant.-Factor 1 m Apert. | Gain(Isotr.) 3 m Apert. | Ant.-Factor 3 m Apert. | Gain(Isotr.) Farfield | Ant.-Factor Farfield |
|-----------|----------------------------|---------------------------|----------------------------|---------------------------|--------------------------|-------------------------|
| MHz | dBi | dB/m | dBi | dB/m | dBi | dB/m |
| 4820.00 | 15.01 | 28.87 | 15.82 | 28.06 | 16.27 | 27.61 |
| 4840.00 | 14.88 | 29.04 | 15.81 | 28.11 | 16.25 | 27.67 |
| 4860.00 | 14.81 | 29.14 | 15.80 | 28.16 | 16.20 | 27.75 |
| 4880.00 | 14.96 | 29.03 | 15.84 | 28.15 | 16.27 | 27.72 |
| 4900.00 | 15.05 | 28.98 | 15.86 | 28.16 | 16.30 | 27.72 |
| 4920.00 | 15.02 | 29.04 | 15.94 | 28.12 | 16.46 | 27.60 |
| 4940.00 | 15.12 | 28.98 | 16.02 | 28.07 | 16.51 | 27.58 |
| 4960.00 | 15.34 | 28.79 | 16.13 | 28.00 | 16.67 | 27.46 |
| 4980.00 | 15.39 | 28.77 | 16.25 | 27.91 | 16.71 | 27.45 |
| 5000.00 | 15.28 | 28.92 | 16.33 | 27.87 | 16.81 | 27.39 |
| 5020.00 | 15.38 | 28.86 | 16.41 | 27.83 | 16.82 | 27.42 |
| 5040.00 | 15.60 | 28.67 | 16.40 | 27.87 | 16.87 | 27.40 |
| 5060.00 | 15.59 | 28.71 | 16.44 | 27.86 | 16.90 | 27.40 |
| 5080.00 | 15.37 | 28.96 | 16.41 | 27.92 | 16.93 | 27.41 |
| 5100.00 | 15.43 | 28.94 | 16.45 | 27.92 | 16.98 | 27.39 |
| 5120.00 | 15.64 | 28.76 | 16.43 | 27.97 | 16.98 | 27.43 |
| 5140.00 | 15.67 | 28.77 | 16.50 | 27.93 | 17.03 | 27.41 |
| 5160.00 | 15.48 | 28.99 | 16.53 | 27.95 | 17.02 | 27.45 |
| 5180.00 | 15.57 | 28.94 | 16.62 | 27.88 | 17.10 | 27.40 |
| 5200.00 | 15.78 | 28.76 | 16.64 | 27.90 | 17.11 | 27.43 |
| 5220.00 | 15.81 | 28.77 | 16.72 | 27.85 | 17.20 | 27.37 |
| 5240.00 | 15.70 | 28.91 | 16.77 | 27.84 | 17.25 | 27.35 |
| 5260.00 | 15.86 | 28.78 | 16.87 | 27.77 | 17.38 | 27.26 |
| 5280.00 | 16.06 | 28.61 | 16.92 | 27.76 | 17.42 | 27.26 |
| 5300.00 | 15.98 | 28.73 | 16.98 | 27.72 | 17.51 | 27.20 |
| 5320.00 | 15.70 | 29.04 | 16.96 | 27.78 | 17.45 | 27.29 |
| 5340.00 | 15.79 | 28.98 | 16.94 | 27.83 | 17.45 | 27.32 |
| 5360.00 | 15.91 | 28.90 | 16.87 | 27.93 | 17.34 | 27.46 |
| 5380.00 | 15.74 | 29.09 | 16.84 | 27.99 | 17.32 | 27.51 |
| 5400.00 | 15.41 | 29.46 | 16.80 | 28.06 | 17.27 | 27.59 |
| 5420.00 | 15.62 | 29.28 | 16.80 | 28.10 | 17.30 | 27.60 |
| 5440.00 | 15.96 | 28.97 | 16.90 | 28.03 | 17.41 | 27.52 |
| 5460.00 | 16.04 | 28.92 | 17.01 | 27.95 | 17.54 | 27.42 |
| 5480.00 | 15.97 | 29.03 | 17.20 | 27.80 | 17.72 | 27.28 |
| 5500.00 | 16.28 | 28.75 | 17.37 | 27.66 | 17.88 | 27.14 |
| 5520.00 | 16.60 | 28.46 | 17.59 | 27.47 | 18.09 | 26.97 |
| 5540.00 | 16.73 | 28.36 | 17.75 | 27.34 | 18.26 | 26.83 |
| 5560.00 | 16.77 | 28.35 | 17.96 | 27.16 | 18.45 | 26.67 |
| 5580.00 | 16.97 | 28.18 | 18.09 | 27.07 | 18.58 | 26.57 |
| 5600.00 | 17.12 | 28.06 | 18.24 | 26.94 | 18.72 | 26.46 |
| 5620.00 | 17.11 | 28.10 | 18.30 | 26.92 | 18.78 | 26.44 |
| 5640.00 | 17.07 | 28.18 | 18.35 | 26.90 | 18.83 | 26.42 |
| 5660.00 | 17.09 | 28.18 | 18.32 | 26.96 | 18.81 | 26.47 |
| 5680.00 | 17.05 | 28.26 | 18.28 | 27.03 | 18.79 | 26.52 |
| 5700.00 | 16.93 | 28.41 | 18.21 | 27.13 | 18.73 | 26.61 |
| 5720.00 | 16.82 | 28.55 | 18.16 | 27.21 | 18.68 | 26.68 |
| 5740.00 | 16.77 | 28.63 | 18.12 | 27.28 | 18.62 | 26.77 |
| 5760.00 | 16.72 | 28.71 | 18.09 | 27.34 | 18.58 | 26.85 |
| 5780.00 | 16.65 | 28.80 | 18.07 | 27.38 | 18.56 | 26.90 |
| 5800.00 | 16.58 | 28.90 | 18.04 | 27.45 | 18.51 | 26.97 |
| 5820.00 | 16.51 | 29.01 | 17.96 | 27.56 | 18.46 | 27.05 |
| 5840.00 | 16.37 | 29.18 | 17.85 | 27.70 | 18.35 | 27.19 |



SCHWARZBECK MESS - ELEKTRONIK

An der Klinge 29 D-69250 Schönau Tel.: +49 6228 1001
Fax.: +49 6228 1003 E-mail: office@schwarzbeck.de

Doppelsteg Breitband Hornantenne BBHA 9120 LFA *Double Ridged Broadband Horn BBHA 9120 LFA*

| Frequency MHz | Gain(Isotr.) 1 m Apert. dBi | Ant.-Factor 1 m Apert. dB/m | Gain(Isotr.) 3 m Apert. dBi | Ant.-Factor 3 m Apert. dB/m | Gain(Isotr.) Farfield dBi | Ant.-Factor Farfield dB/m |
|------------------|-----------------------------------|-----------------------------------|-----------------------------------|-----------------------------------|---------------------------------|---------------------------------|
| 5860.00 | 16.17 | 29.41 | 17.68 | 27.90 | 18.22 | 27.36 |
| 5880.00 | 15.99 | 29.62 | 17.50 | 28.10 | 18.02 | 27.59 |
| 5900.00 | 15.76 | 29.88 | 17.28 | 28.35 | 17.81 | 27.83 |
| 5920.00 | 15.43 | 30.23 | 17.03 | 28.64 | 17.52 | 28.15 |
| 5940.00 | 15.08 | 30.62 | 16.78 | 28.92 | 17.26 | 28.43 |
| 5960.00 | 14.81 | 30.92 | 16.49 | 29.24 | 16.95 | 28.78 |
| 5980.00 | 14.50 | 31.25 | 16.22 | 29.54 | 16.67 | 29.09 |
| 6000.00 | 14.07 | 31.72 | 15.88 | 29.90 | 16.32 | 29.46 |
| 6020.00 | 13.69 | 32.12 | 15.58 | 30.23 | 16.02 | 29.79 |
| 6040.00 | 13.47 | 32.37 | 15.25 | 30.59 | 15.67 | 30.17 |
| 6060.00 | 13.06 | 32.80 | 14.90 | 30.97 | 15.36 | 30.50 |
| 6080.00 | 12.44 | 33.45 | 14.56 | 31.34 | 14.96 | 30.94 |
| 6100.00 | 12.12 | 33.81 | 14.17 | 31.75 | 14.67 | 31.26 |
| 6120.00 | 11.92 | 34.03 | 13.85 | 32.11 | 14.21 | 31.75 |
| 6140.00 | 11.50 | 34.49 | 13.46 | 32.52 | 13.95 | 32.03 |
| 6160.00 | 10.84 | 35.18 | 13.26 | 32.75 | 13.54 | 32.47 |
| 6180.00 | 10.86 | 35.18 | 12.97 | 33.07 | 13.41 | 32.63 |
| 6200.00 | 10.90 | 35.16 | 12.88 | 33.19 | 13.11 | 32.96 |
| 6220.00 | 10.51 | 35.58 | 12.63 | 33.47 | 13.07 | 33.03 |
| 6240.00 | 9.89 | 36.24 | 12.54 | 33.58 | 12.82 | 33.31 |
| 6260.00 | 10.06 | 36.09 | 12.22 | 33.93 | 12.73 | 33.42 |
| 6280.00 | 10.07 | 36.11 | 12.04 | 34.14 | 12.37 | 33.81 |
| 6300.00 | 9.43 | 36.78 | 11.65 | 34.56 | 12.14 | 34.07 |
| 6320.00 | 8.49 | 37.74 | 11.41 | 34.82 | 11.67 | 34.57 |
| 6340.00 | 8.64 | 37.62 | 11.04 | 35.22 | 11.42 | 34.84 |
| 6360.00 | 8.56 | 37.73 | 10.86 | 35.43 | 11.05 | 35.24 |
| 6380.00 | 7.73 | 38.58 | 10.58 | 35.74 | 10.89 | 35.43 |
| 6400.00 | 7.13 | 39.22 | 10.42 | 35.92 | 10.66 | 35.68 |
| 6420.00 | 7.80 | 38.57 | 10.18 | 36.19 | 10.49 | 35.88 |
| 6440.00 | 7.88 | 38.52 | 10.04 | 36.35 | 10.40 | 36.00 |
| 6460.00 | 7.04 | 39.39 | 9.89 | 36.54 | 10.19 | 36.23 |
| 6480.00 | 6.99 | 39.46 | 9.81 | 36.64 | 10.19 | 36.27 |
| 6500.00 | 7.99 | 38.49 | 9.79 | 36.69 | 9.96 | 36.52 |