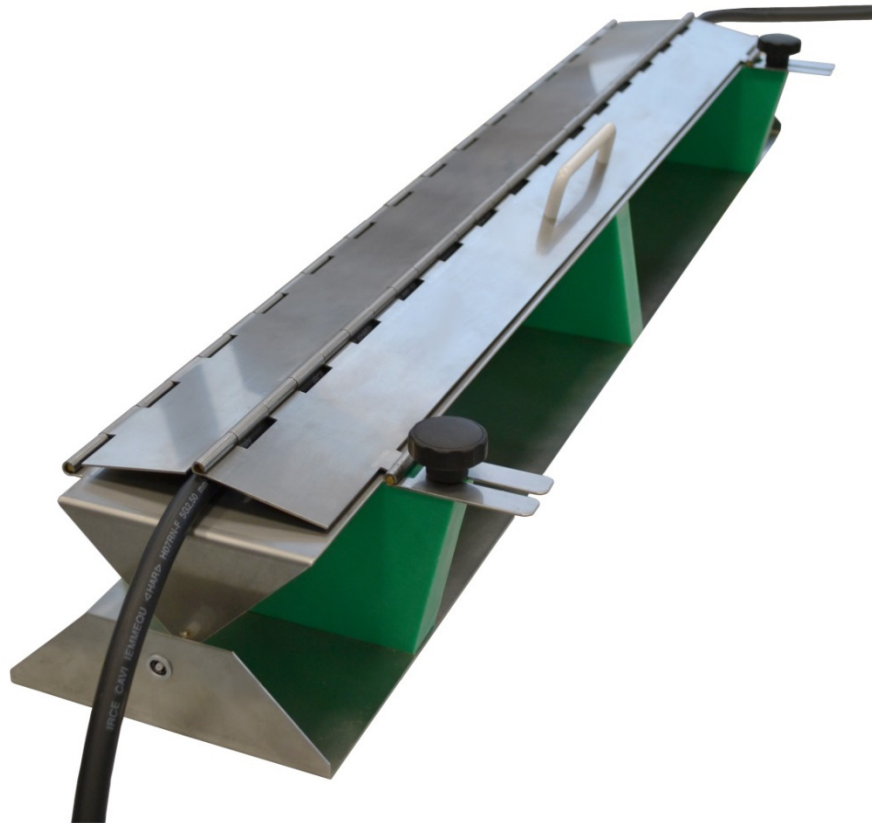


# EFTC 2012

Capacitive Coupling Clamp  
for Burst / EFTG impulses



## According to

IEC 61000-4-4 : 2012 Ed 3.0

IEC 61000-4-4 : 2004 Ed 2.0

The Capacitive Coupling Clamp, EFTC 2012, provides the ability to couple Burst / EFT pulses to data lines. It can also be used for coupling to main lines where no CDN is available, for example high current lines >200 A.

Calibrated with calibration kit acc. to IEC 61000-4-4 : 2012 Ed 3.0

Technical Specification	EFTC 2012
Dimensions: W * H * L	140 * 180 * 1100 mm <sup>3</sup>
Incl. coaxial connection cable, Fischer Coax	ca. 1 m long
Max. cable diameter	ca. 42 mm

Sales Partner:



ABSOLUTE EMC Lic.  
Covering sales in North America  
United States, Mexico, & Canada

absolute-emc.com  
Phone: 703-774-7505  
info@absolute-emc.com

10/16  
Page 1 of 1  
www.hilo-test.de