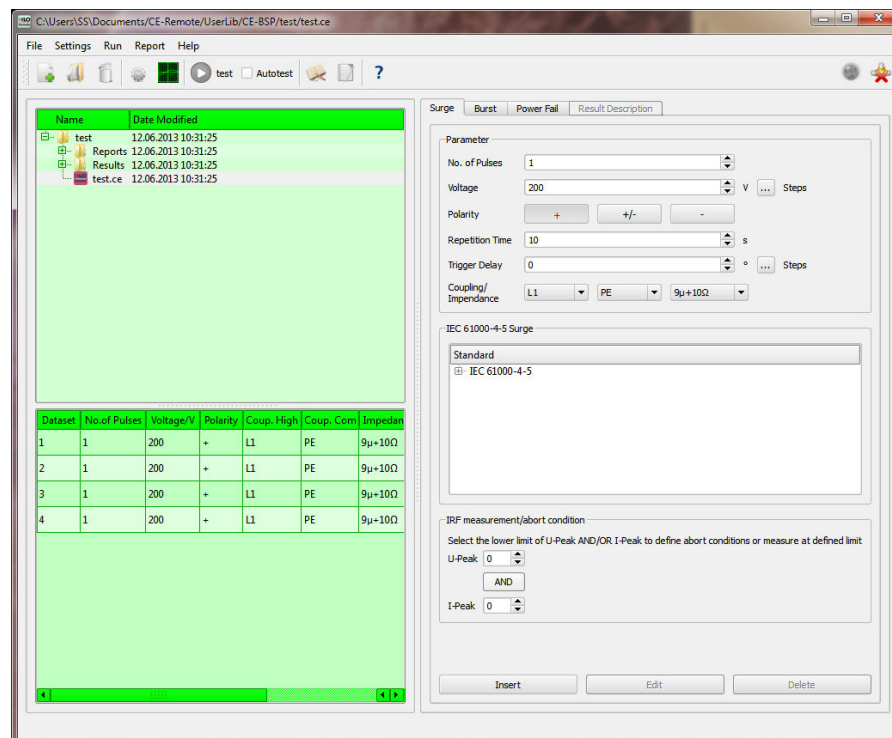


Hilo-Test Remote Control

Hilo Remote Control is the ultimate remote control software for all CE-Generators of HILO-TEST. The software is clearly structured and all information's and settings are visible in one window. The software allows users to create user defined tests and test reports which can be modified with your standard text-editing program. In addition, with an oscilloscope it is possible to monitor every single test pulse and to store the image on the computer. The communication with the generator is realized with a LAN connection. As a replacement for cable, the generator can be connected via an optical interface. Thus, the PC is completely isolated from the generator.



Features

- Windows 7 and Windows 8 (32 / 64Bit) compatibility / Linux /Android
- LAN interface (fully isolated by connected via an optical interface)
- Standard library (61000-4-4/5/11)
- Real Time pulses monitoring
- Intuitive operation
- Up-to-date design and navigation
- Test reports can be modified with your standard text-editing program

Sales Partner:

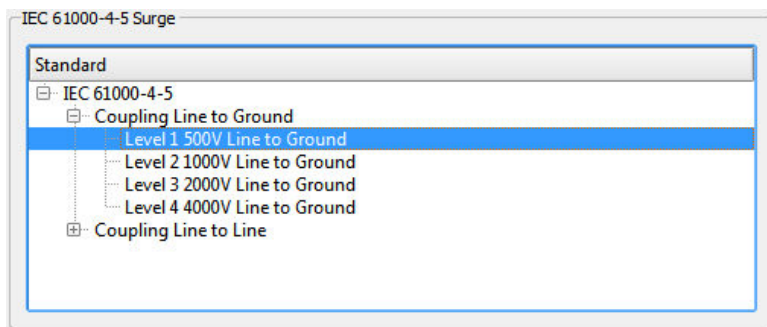


ABSOLUTE EMC Llc.
Covering sales in North America
United States, Mexico, & Canada

absolute-emc.com
Phone:703-774-7505
info@absolute-emc.com www.hilo-test.de

07/13
Page 1/4

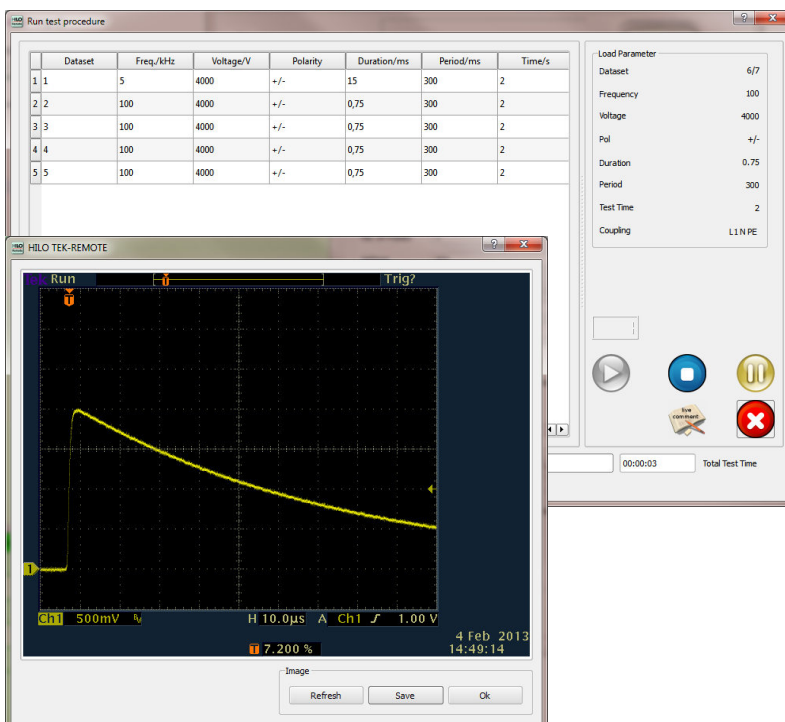
Standard library



Standard library of actual standards like
 IEC 61000-4-4
 IEC 61000-4-5
 IEC 61000-4-11
 All parameter are editable to make a user defined test

Real time pulse monitoring and Impulse Recording Function (IRF)

A main feature of the software is the real time pulse monitoring. While executing a test procedure, test parameters and measured values like peak voltage and peak current are recorded and displayed on the screen. If HILO IFR is activated, a separate window shows the recorded pulse.



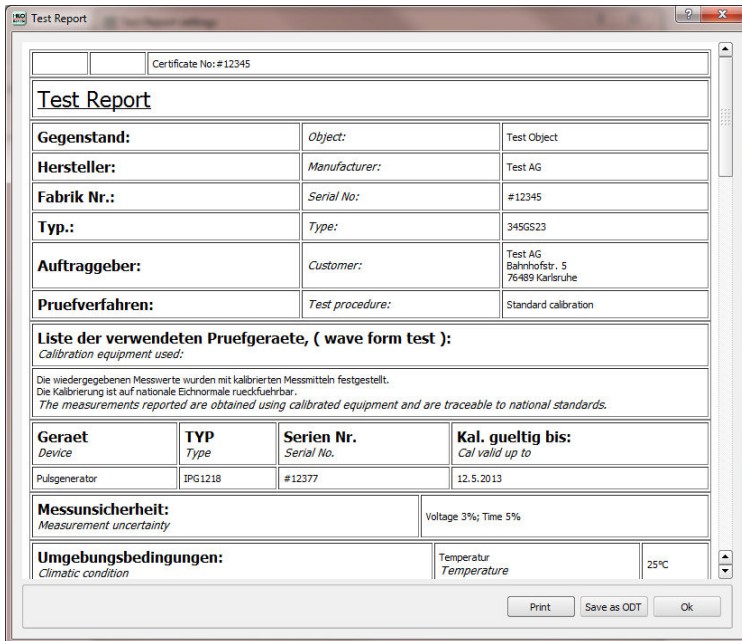
Sales Partner:



ABSOLUTE EMC Lic.
 Covering sales in North America
 United States, Mexico, & Canada

absolute-emc.com
 Phone: 703-774-7505
 info@absolute-emc.com

Test reports



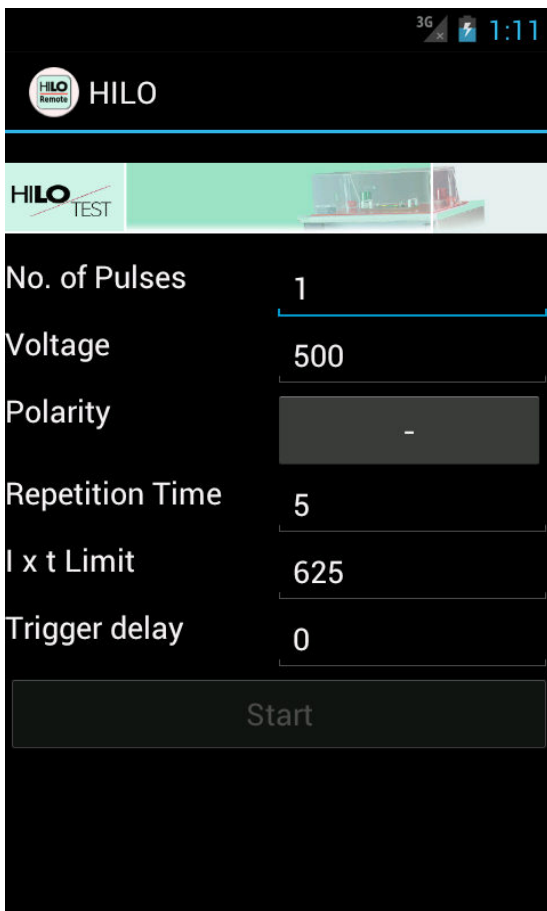
Certificate No: #12345		
Test Report		
Gegenstand:	Object:	Test Object
Hersteller:	Manufacturer:	Test AG
Fabrik Nr.:	Serial No:	#12345
Typ.:	Type:	345GS23
Auftraggeber:	Customer:	Test AG Bahnhofstr. 5 76489 Karlsruhe
Pruefverfahren:	Test procedure:	Standard calibration
Liste der verwendeten Pruefgeraete, (wave form test):		
<i>Calibration equipment used:</i>		
Die wiedergegebenen Messwerte wurden mit kalibrierten Messmitteln festgestellt. Die Kalibrierung ist auf nationale Eichnormale rueckfuehrbar. <i>The measurements reported are obtained using calibrated equipment and are traceable to national standards.</i>		
Geraet <i>Device</i>	TYP <i>Type</i>	Serien Nr. <i>Serial No.</i>
Pulsgenerator	IPG1218	#12377
Kal. gueltig bis: <i>Cal valid up to</i>		12.5.2013
Messunsicherheit: <i>Measurement uncertainty</i>		Voltage 3%; Time 5%
Umgebungsbedingungen: <i>Climatic condition</i>		Temperatur Temperature 25°C
<input type="button" value="Print"/> <input type="button" value="Save as ODT"/> <input type="button" value="Ok"/>		

Generate complete test reports of all tests performed as required by international standards.

Values like certificate no., measurement uncertainty, climatic conditions and the result status can be assigned.

Test reports can be modified with your standard text-editing program and is also saved as html.

Android



3G 1:11

HILO Remote

HILO TEST

No. of Pulses: 1

Voltage: 500

Polarity: -

Repetition Time: 5

I x t Limit: 625

Trigger delay: 0

Start

Control all HILO-TEST generators via WIFI from your Android smartphone or tablet. Simply set the main parameters of the generator and start the test procedure. Especially usefull on a production line or to control the generator without wired connection to the control center.

Sales Partner:



ABSOLUTE EMC LLC.
Covering sales in North America
United States, Mexico, & Canada

absolute-emc.com
Phone: 703-774-7505
info@absolute-emc.com

Hardware included

- fiber optic cable cable 5m
- Light Guide LAN Ethernet converters
- Power supply for converter



Sales Partner:



ABSOLUTE EMC LLC.
Covering sales in North America
United States, Mexico, & Canada

absolute-emc.com
Phone: 703-774-7505
info@absolute-emc.com