

# Multi CE5

Compact EMC test system Generation 4



Burst generator



Surge generator



Power Fail generator



50Hz/60Hz/ Pulsed magnetic fields

Immunity testing in compliance with:

- |                   |  |
|-------------------|--|
| IEC 61000-4-4     | Burst                                    |
| IEC 61000-4-5     | Surge                                    |
| IEC 61000-4-8     | Power frequency magnetic fields          |
| IEC 61000-4-9     | Pulse magnetic fields                    |
| IEC 61000-4-11/29 | AC/ DC dips, interruption and variations |
- and any more product standards

 **made  
in  
Germany**

# Multi CE5

compact EMC test solution



## Control interface

Customizing of test procedures | Live monitoring and controlling of parameters  
 Integrated standard libraries | Auto-testing procedures of different generators

Frequency  kHz

Voltage  V

Polarity

Duration  ms

Period  ms

Testtime  s

Coupling

Test Procedure: Test123 (mp) Dataset 11

Insert

Data Set	No. of Pulses	Voltage/V	Polarity	Coupling	Impedance
4 4	1	2000	+	L1 → PE	9µF + 10
5 5	1	2500	+	L1 → PE	9µF + 10
6 6	1	3000	+	L1 → PE	9µF + 10
7 7	1	3500	+	L1 → PE	9µF + 10
8 8	1	4000	+	L1 → PE	9µF + 10
9 9	1	4500	+	L1 → PE	9µF + 10
10 10	1	5000	+	L1 → PE	9µF + 10

Save to USB

Remaining Test Time  s

43%

V

Voltage  V

Period  ms

Frequency  kHz

Polarity

Duration  ms

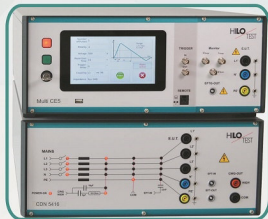
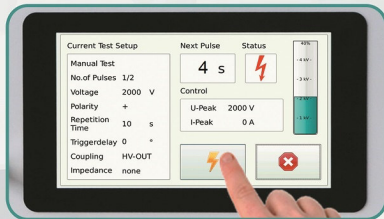
Coupling

Live control

# 4th generation of combined test solutions

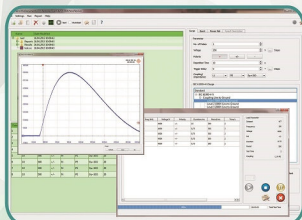
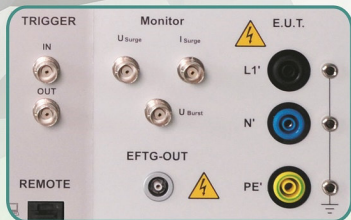
## Convenience

7" capacitive touch screen including digital dial | Trigger input and output on the front  
Voltage and current monitoring | Internal 1-phase CDN | Silent operation | Easy connectivity



## Time saving

EUT output connectors on the front | One EUT output for Burst/Surge and Power Fail Generator  
USB connectivity for fast and easy documentation | Software with automatic pulse recording



## Safety

Rd/gn safety lamps | Key switch | Safety connector | Ethernet connectivity over light guide  
External warning lights connector | Plug adapter for Schuko including



## Technical data:

### Multi CE5 generator mainframe:

Control, with touch screen	7" capacitive
Ethernet interface for remote control	optical, 5m fibre cable
Interface for saving reports	USB
External trigger input/ output	Switch/ 10V
Coupling/decoupling network	internal, single-phase
External connectors:	
- safety interlock	24V=
- warning lamps	Red/ green
- sync input	BNC
- devices	Serial interface
Mains power supply	90-264V, 50/60Hz
Connection set	Cables, Schuko box
Dimensions:	
Desktop unit, 4 HU, W*H*D	450*180*500mm <sup>3</sup>
Weight	25 kg



### Burst:

According to IEC 61000-4-4	
Burst impulse waveform	5/50ns
Output impedance	50Ω
Polarity, switchable	pos / neg / alt
Test voltage, adjustable	200V-5kV ±10%
Burst frequency, adjustable	1.0 kHz – 1.0 MHz
Burst duration, adjustable	0.01 ms – 25 ms
Burst repetition rate, adjustable	10 ms – 1000 ms
Pulse triggering	auto, conf, ext.
HV-output to connect ext. networks	coaxial HV jacket
Monitor output for impulse voltage	r = 100:1

### Surge:

According to IEC 61000-4-5



Open-circuit voltage, adjustable	200V-5kV ±10%
Impulse voltage waveform	1.2/50µs ±30/20%
Short-circuit current, adjustable	100A-2.5kA ±10%
Impulse current waveform	8/20µs ±20%
Polarity, switchable	pos / neg / alt
Pulse repetition time	min. 1 - 1000 sec.
Number of pulses	1-1000
Trigger point synchronisation, selectable	0°-359°, step 1°
HV-output to connect ext. networks	4 mm
Monitor output for impulse voltage	1000:1
Monitor output for impulse current	Rm = 2mΩ

### Power fail switch:

According to IEC 61000-4-11/29



Nominal voltage/current	250V/16A
Inrush-current capability	> 500 A
Switch-ON-delay, adjustable	0°-359°
Switching to fail voltage for	0.5-1000 periods
Switch-OFF-delay, adjustable	0°-359°
Wait time, adjustable	1-1000 sec
Number of repetitions, selectable	1-1000
Monitor output for impulse voltage	1000:1
Monitor output for impulse current	Rm = 2mΩ

### Expandable:

Helmholtz coil H1200 for pulse magnetic field tests according to IEC 61000-4-9



### Expandable:

Helmholtz coil H1200 for 50/60 Hz magnetic field tests according to IEC 61000-4-9



Variable power supply VPS 250-16 for power variations acc. to IEC 61000-4-11



## Accessories:



Remote Software  
HILO-Remote



Coupling / decoupling  
networks



Calibration Kit Burst



Calibration Kit Surge



External warning lights



Emergency stop button

contact us for further options

## Contact us:

Hilo Test  
Elektrische Prüf- und Messtechnik GmbH  
Am Hasenbiel 42  
D 76297 Stutensee / Karlsruhe

Internet: [www.hilo-test.de](http://www.hilo-test.de)  
Email: [info@hilo-test.de](mailto:info@hilo-test.de)  
Telefon: 07244 / 20500-0  
Fax: 07244 / 20500-39

